

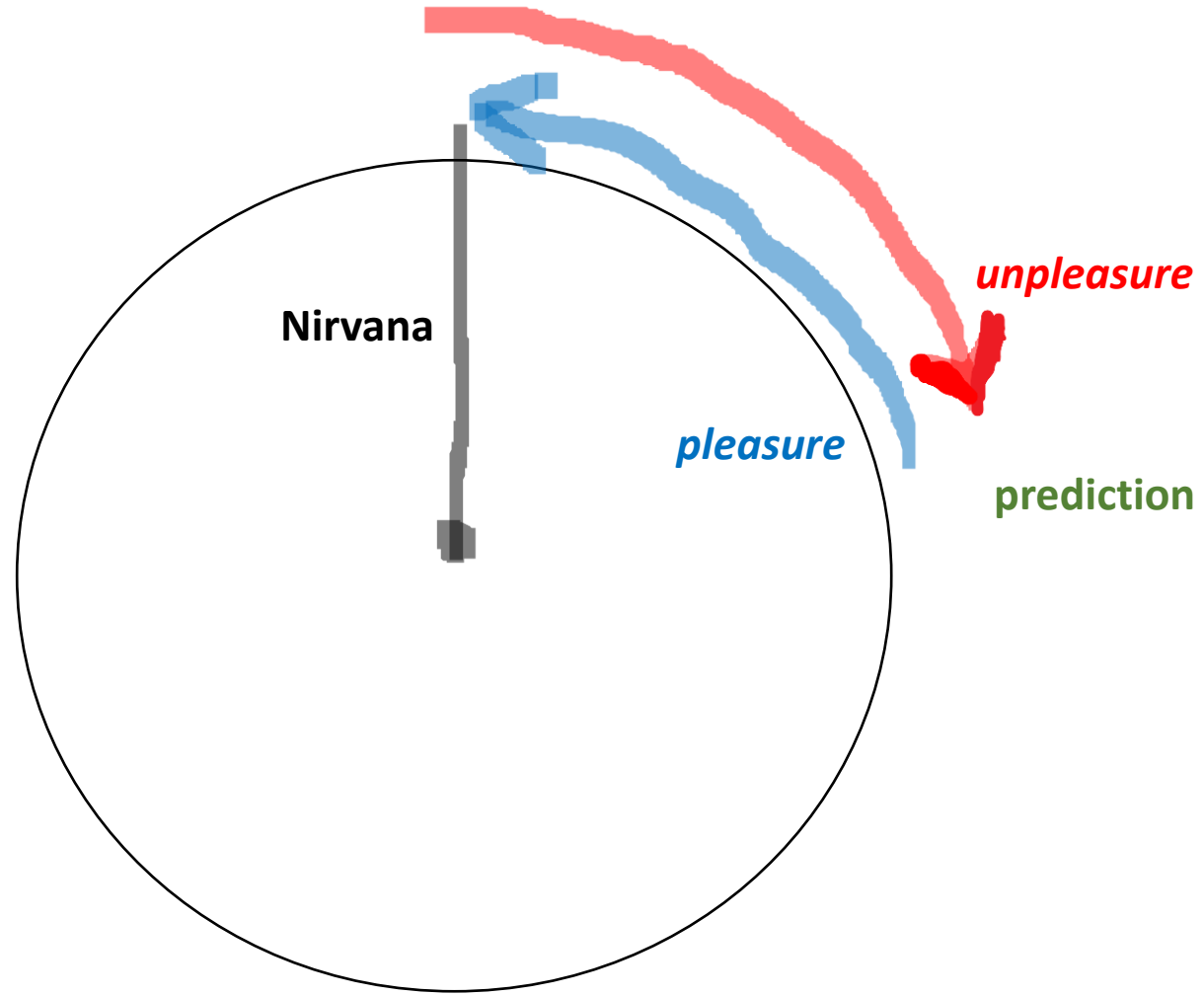
What Does the Human Animal Want?

Mark Solms

Neuroscience Institute, University of Cape Town

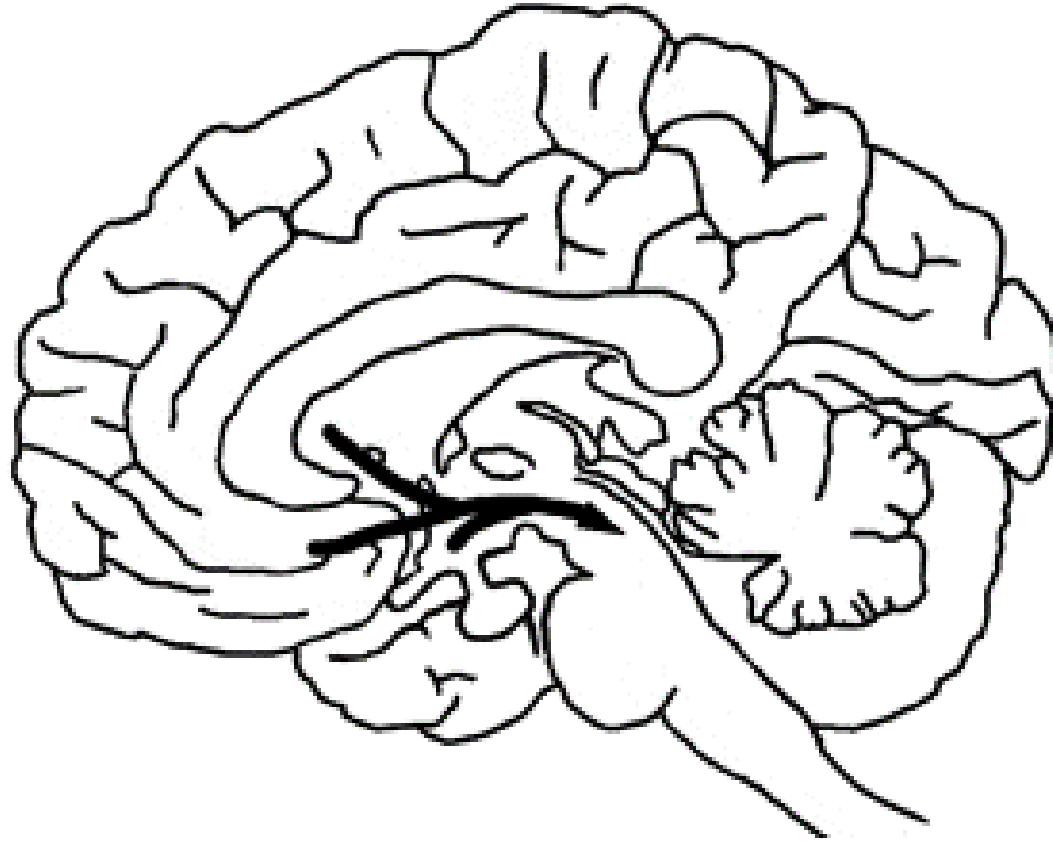
“Drive appears to us as a concept on the frontier between the mental and the somatic, as the psychical representative of the stimuli originating from within the organism and reaching the mind, as a **measure of the demand made upon the mind for work** in consequence of its connection with the body.”

Freud (1915)

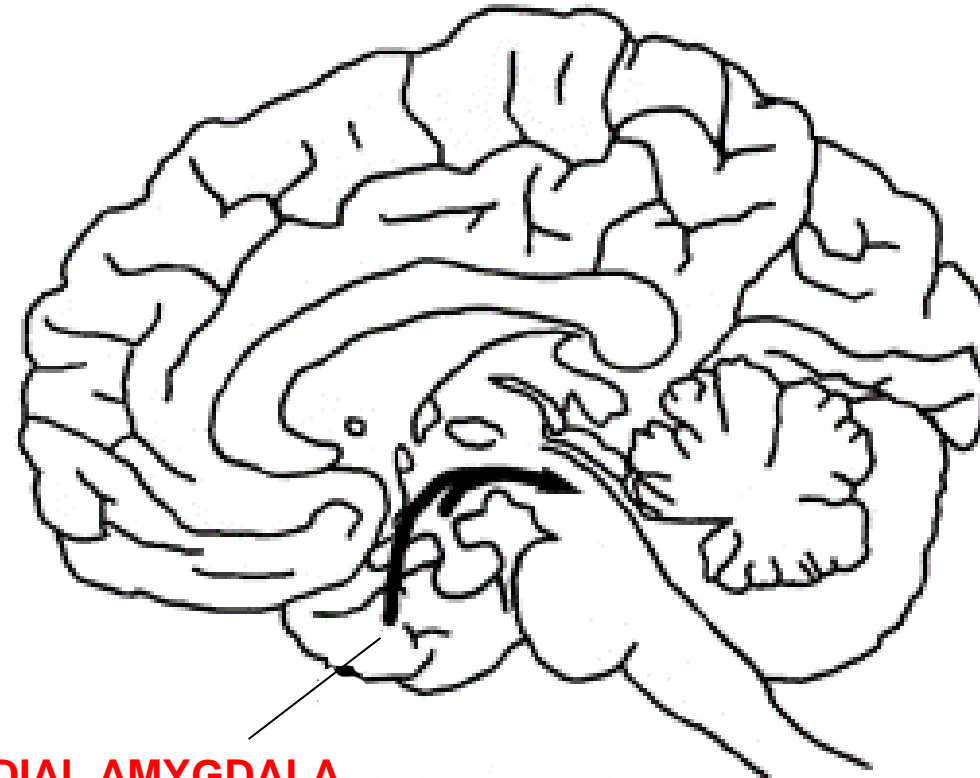


HOMEOSTASIS

1. LUST

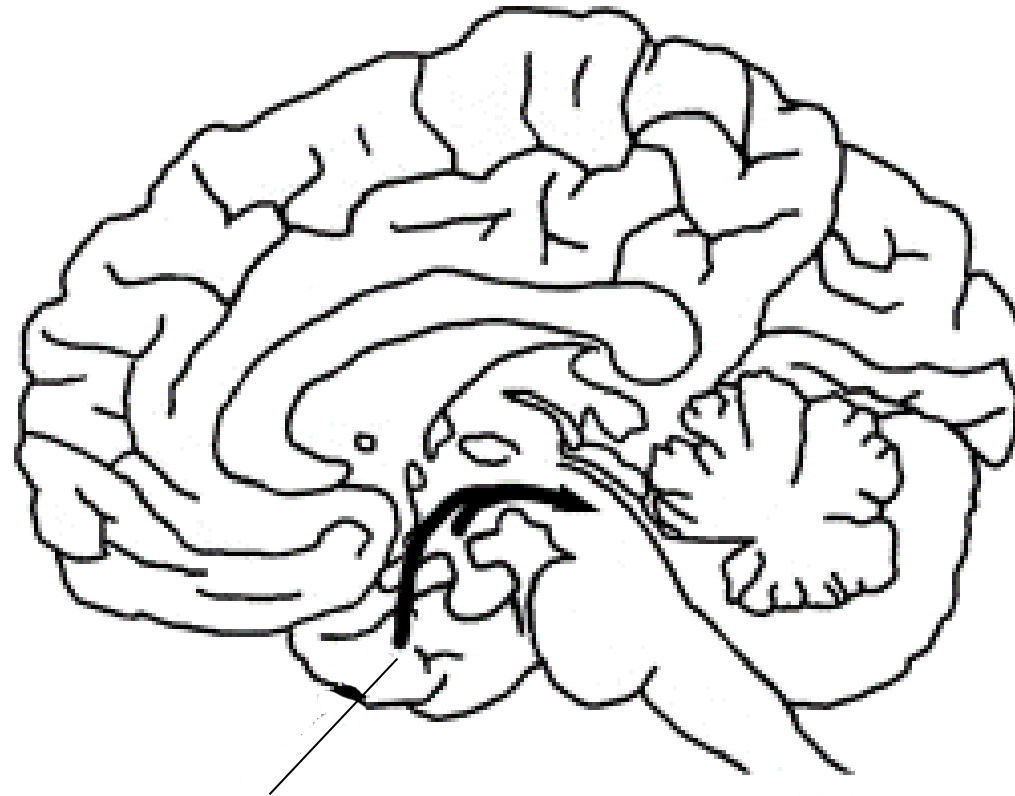


2. RAGE



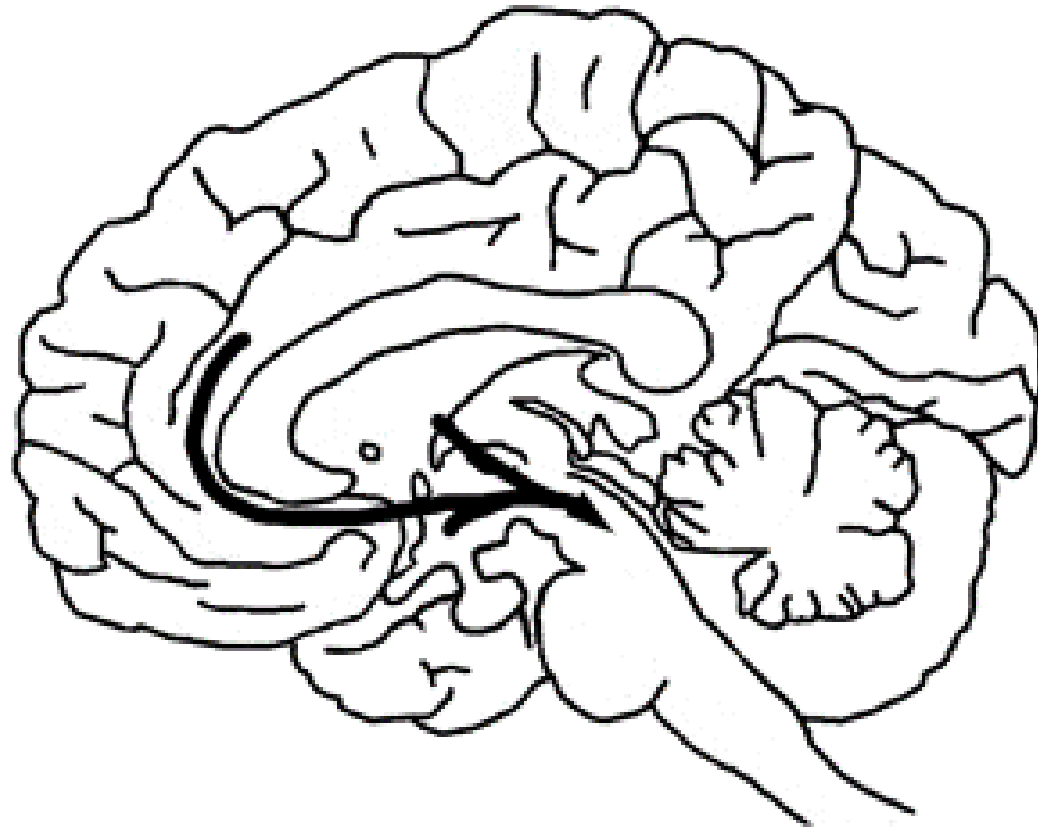
MEDIAL AMYGDALA

3. FEAR

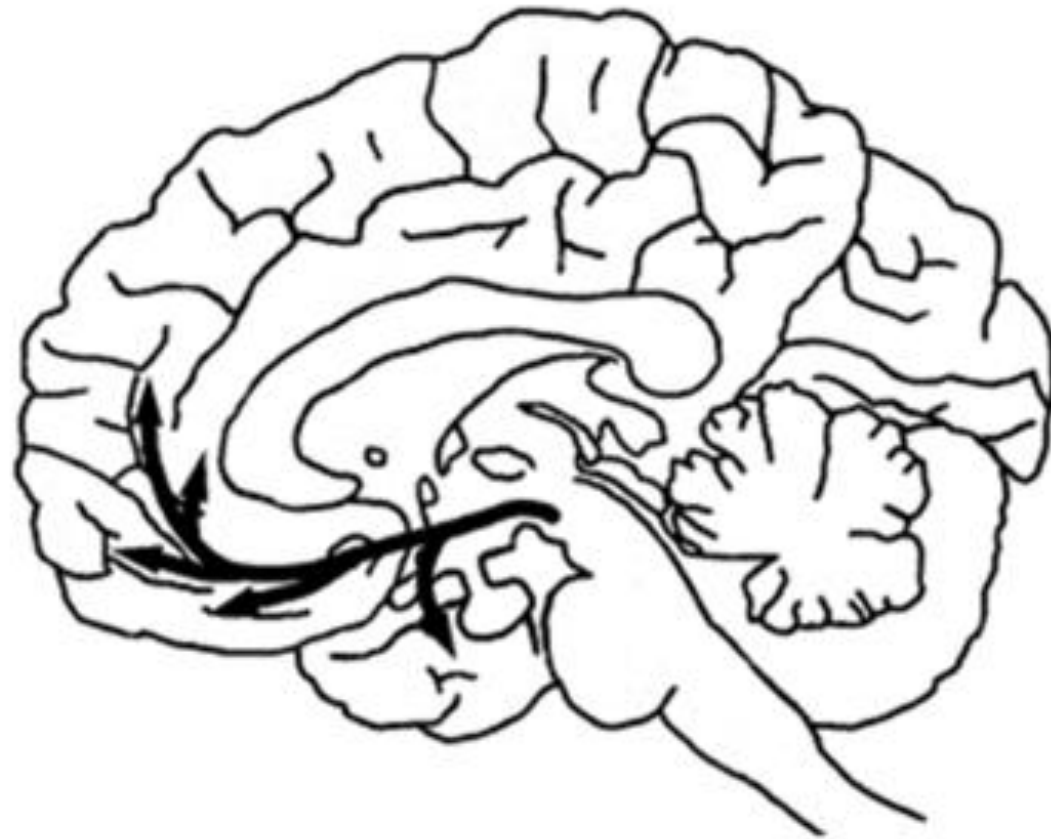


LATERAL/CENTRAL AMYGDALA

4. PANIC/GRIEF



5. SEEKING

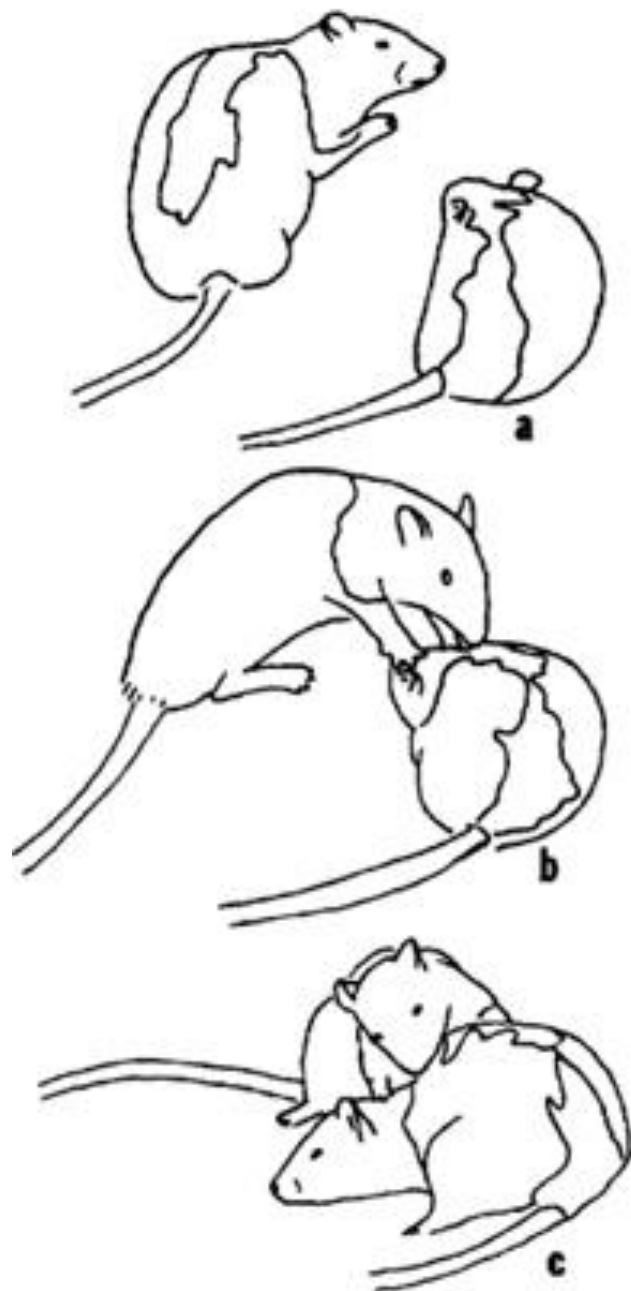
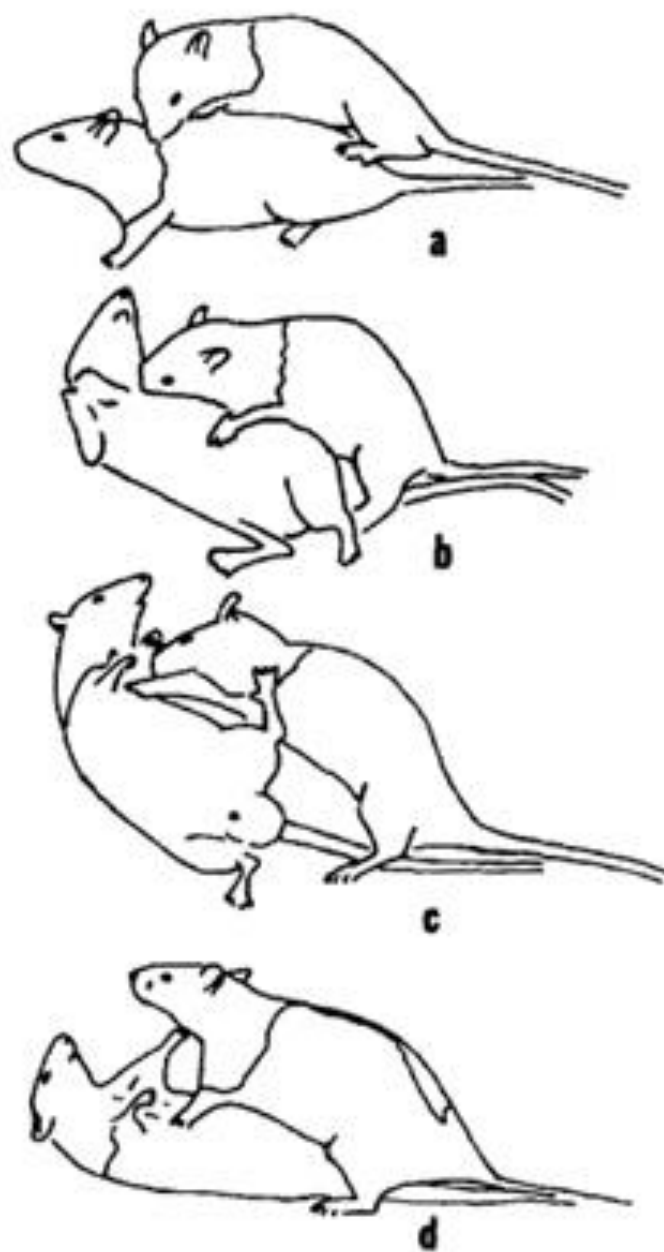
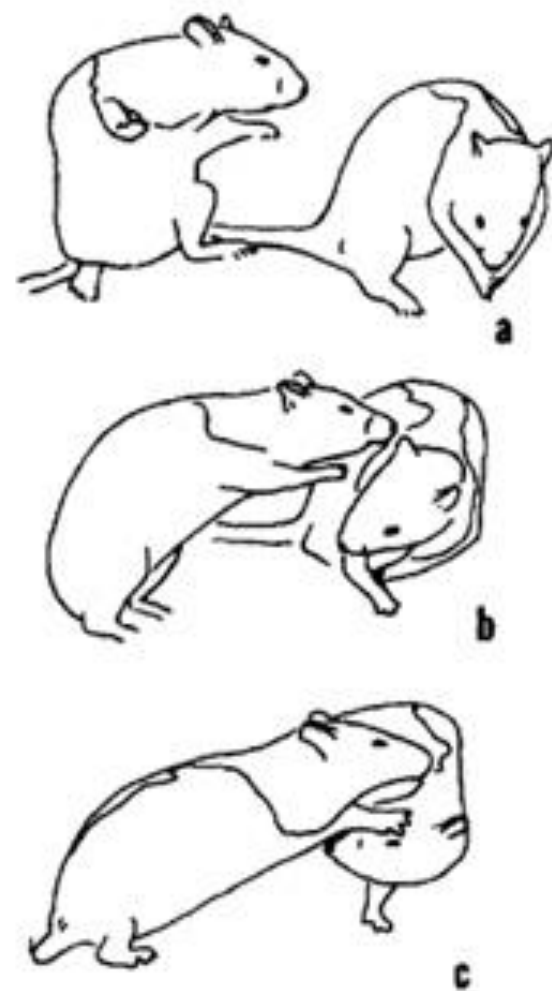


6. CARE



7. PLAY



A**B****C**

Mammal societies are organized
HIERARCHICALLY

1. The '60:40' rule

2. The 'as if' rule

