

DSSH



March 7&8 2024
Groningen

DSSH

IMPACT

INNOVEREN. MOTIVEREN. PRESTEREN.
ANTICIPEREN. CREËREN. TRANSFORMEREN.

Digital United Training Concepts in Healthcare

Jaap Bonjer

Opleiding Heelkunde 1987 - 1993

'Time based education'



Wie geen complicaties heeft, opereert niet

Het is niet altijd kaviaar in de chirurgie

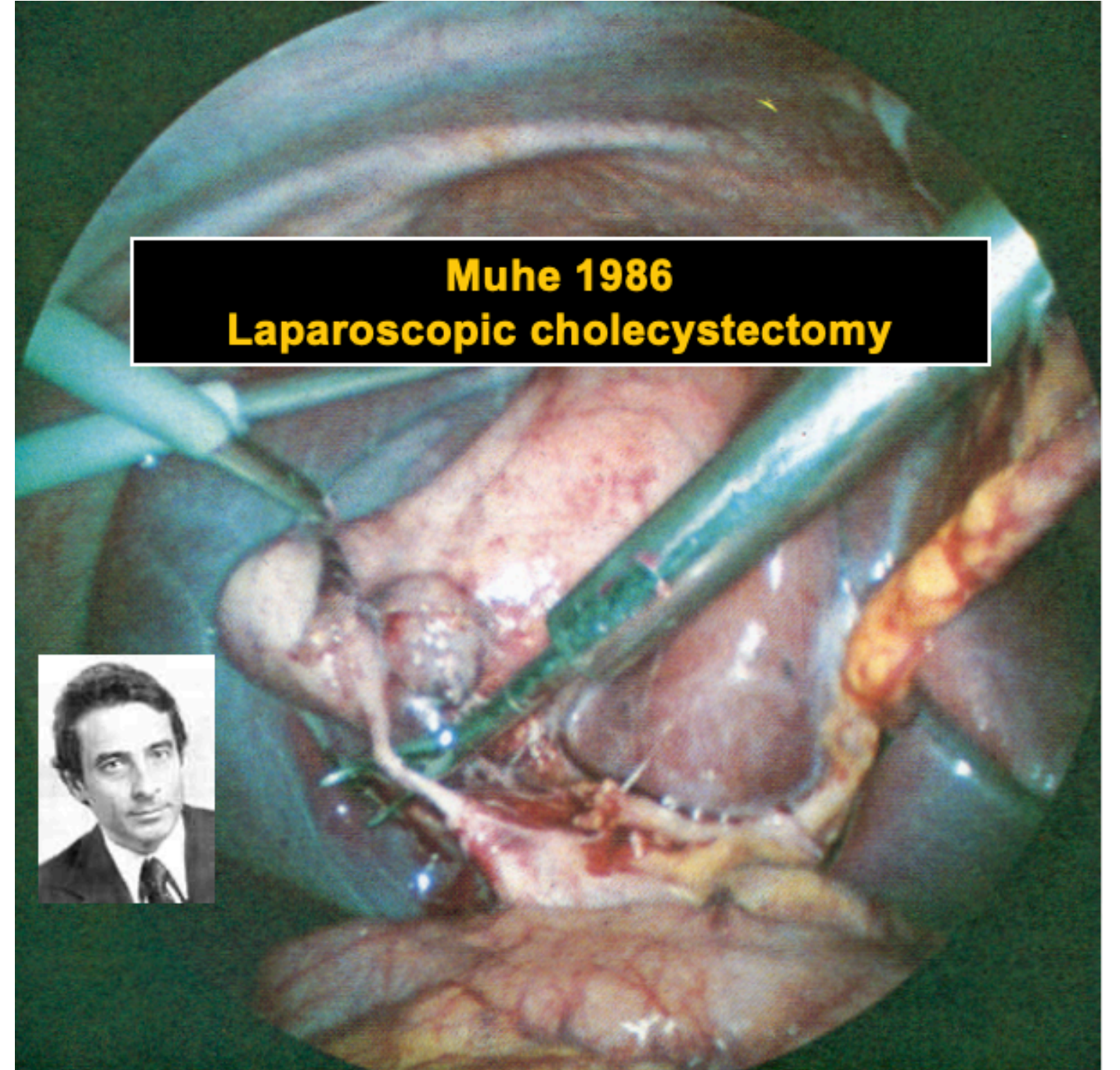
Doe goed en ga heen

Zie niet om maar kijk vooruit

Academisch Ziekenhuis Dijkzigt



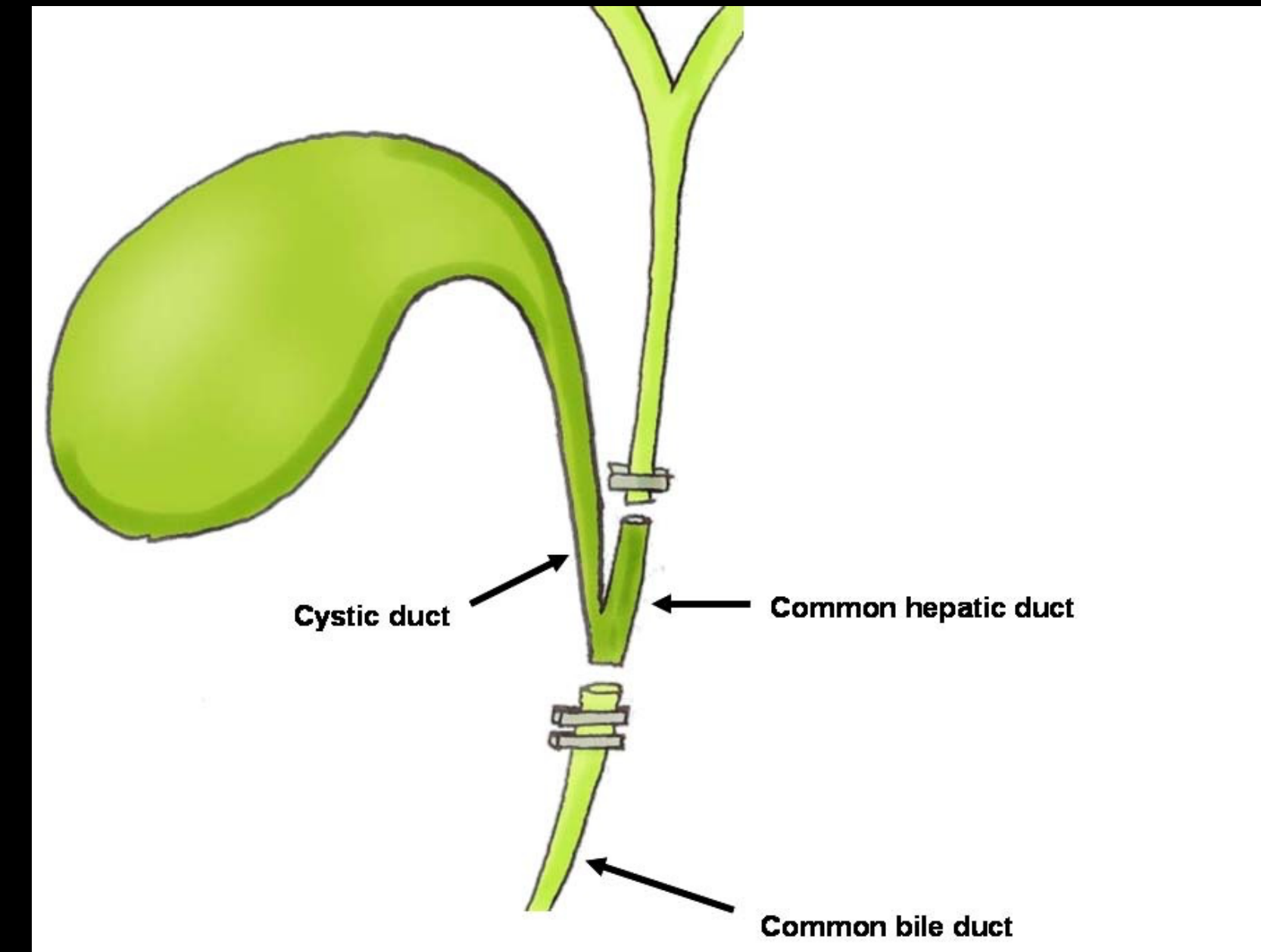
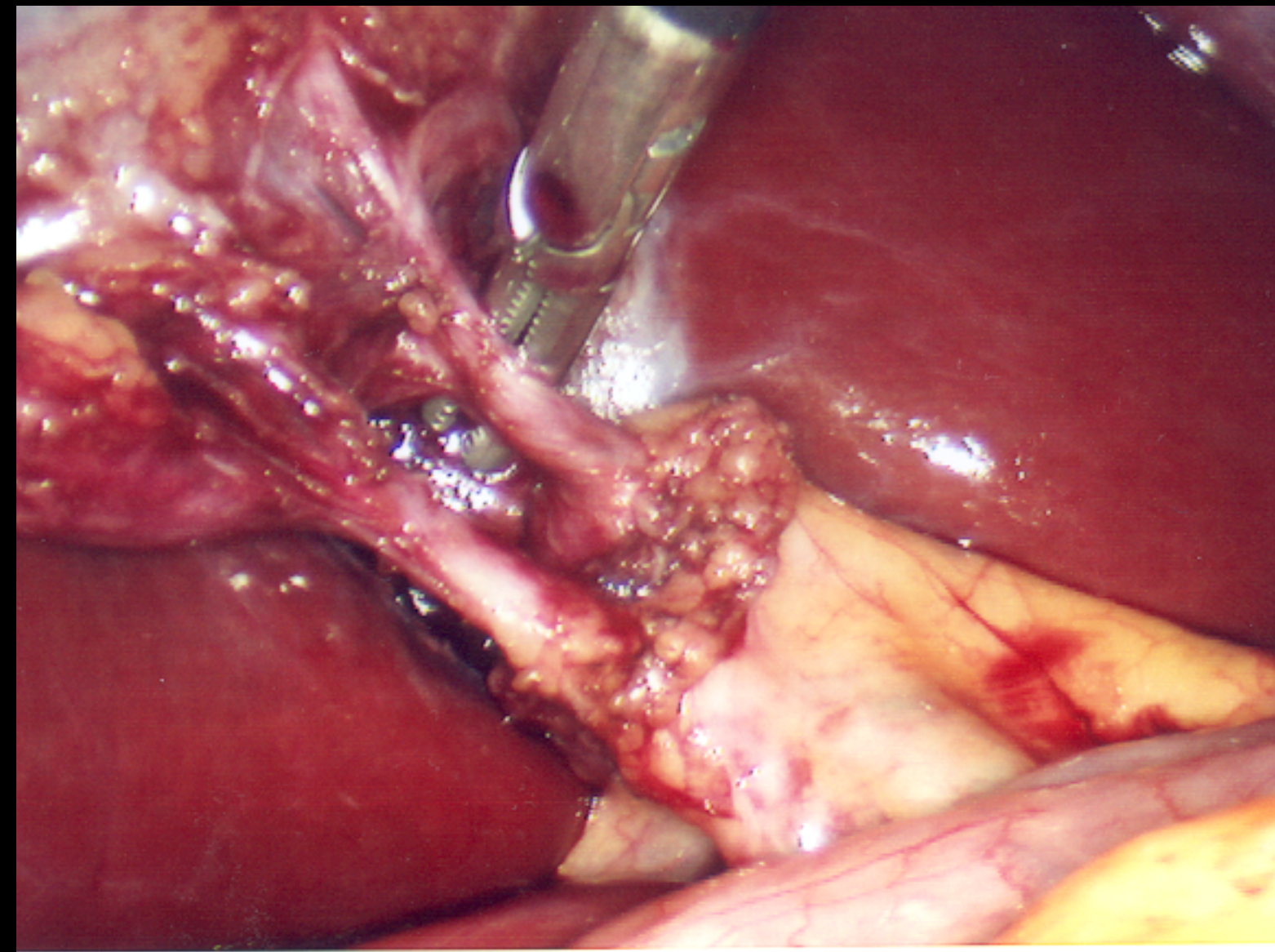
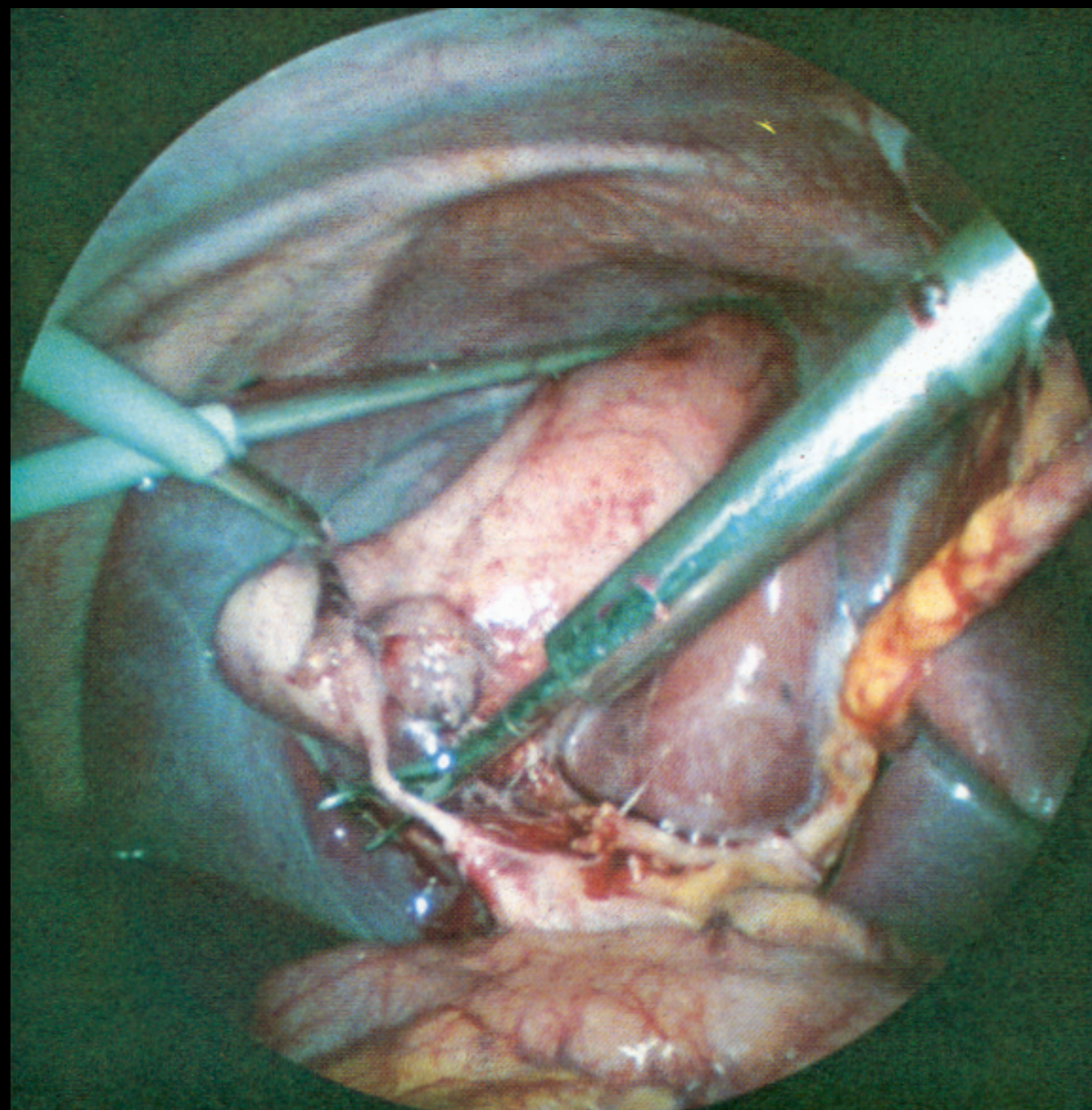
St. Clara Ziekenhuis



Laparoscopische galblaasoperatie Rotterdam mei 1990



Bile Duct Injury (0.5 %) - Preventable Complication



USA 750,000 lap cholecystectomies - 3,750 bile duct injuries annually

Port site metastases

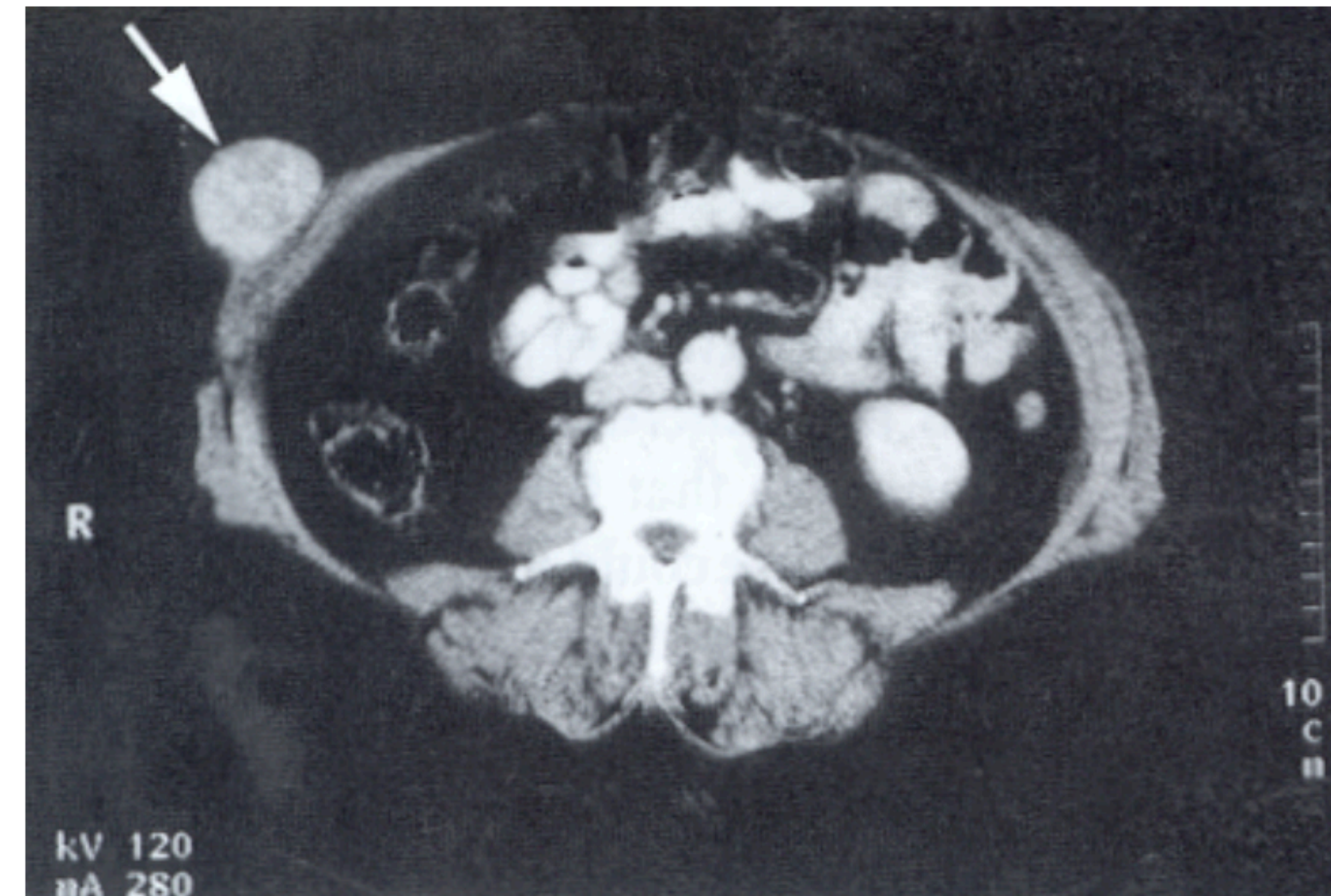
THE LANCET

Subcutaneous metastases after laparoscopic colectomy

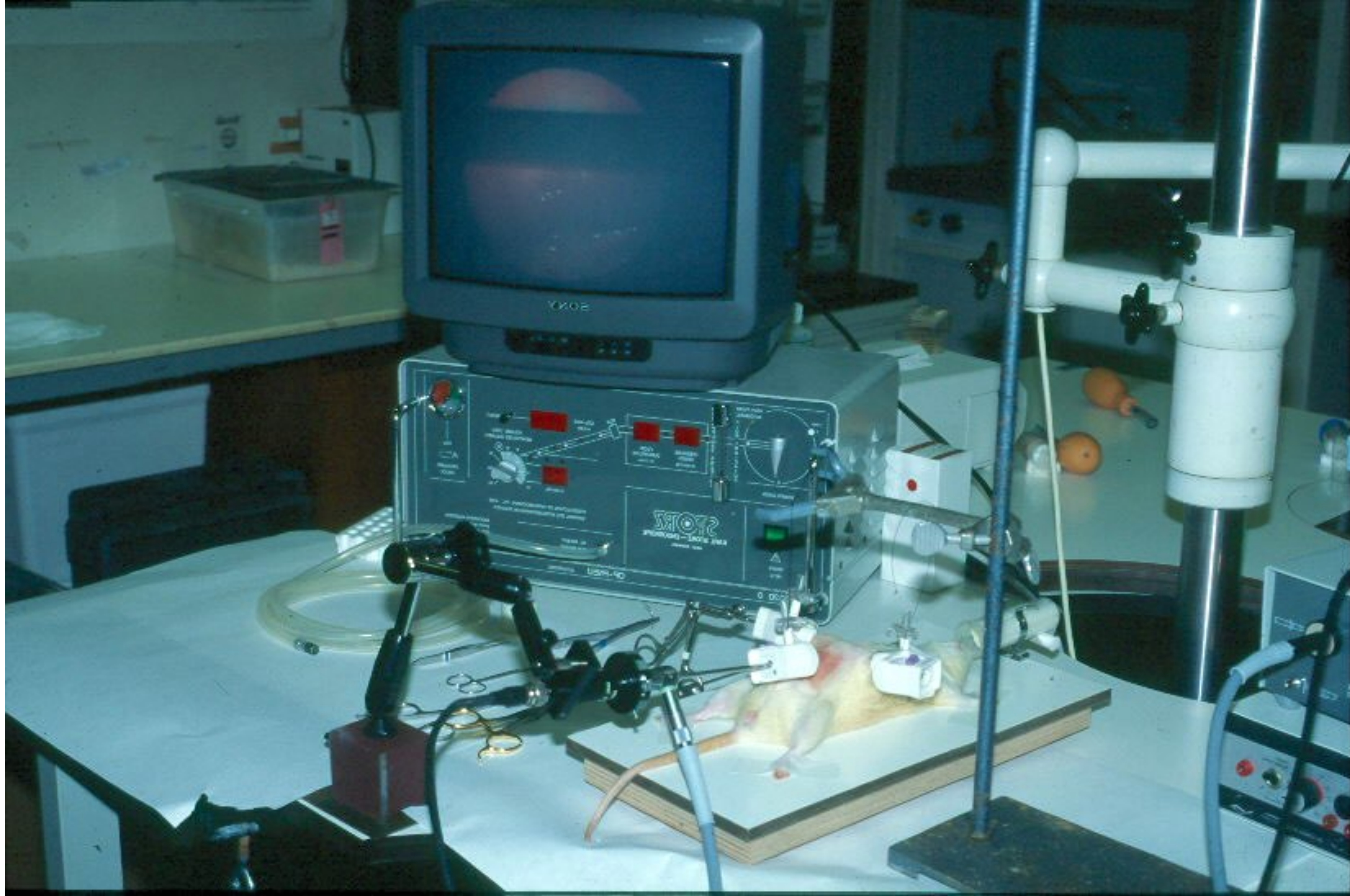
Frederik J Berends, Geert Kazemier, Hendrik J Bonjer,
Johan F Lange

Department of General Surgery, St Clara Hospital, 3078 HT Rotterdam, Netherlands;
and Department of General Surgery, Academic Hospital Dijkzigt, Rotterdam

- 1 Wexner SD, Cohen SM, Johansen OB, Nogueras JJ, Jagelman DG. Laparoscopic colorectal surgery: a prospective assessment and current perspective. *Br J Surg* 1993; **80**: 1602-05.
- 2 Fusco MA, Paluzzi MW. Abdominal wall recurrence after laparoscopic assisted colectomy for adenocarcinoma of the colon. *Dis Colon Rectum* 1993; **36**: 858-61.
- 3 Alexander RJT, Jaques BC, Mitchell KG. Laparoscopically assisted colectomy and wound recurrence. *Lancet* 1993; **341**: 249-50.
- 4 Iitsuka Y, Kaneshima S, Tanida O, Takeuchi T, Koga S. Intraperitoneal free cancer cells and their viability in gastric cancer. *Cancer* 1986; **58**: 1609-20.
- 5 Umpleby HC, Fermor B, Symes MO, Williamson RC. Viability of exfoliated colorectal carcinoma cells. *Br J Surg* 1984; **71**: 659-63.



Berends, Lancet 1994





1997
First laparoscopic
donor nephrectomy



2003
Erasmus MC Skills Lab
Rotterdam



2007
Skills Centre for Health Sciences
Halifax, Canada



Simulated Environment

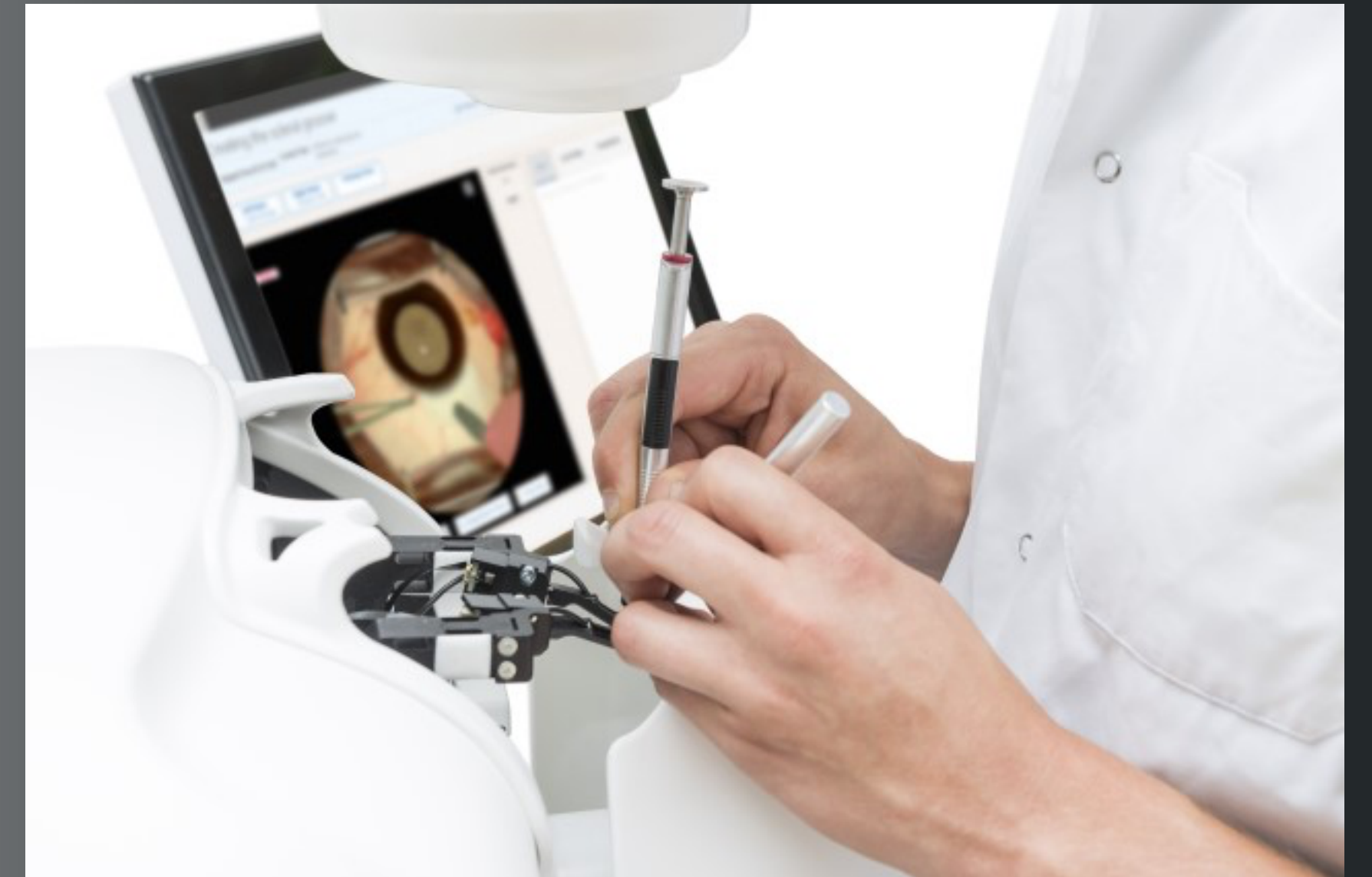
AMSTERDAM SKILLS CENTRE





HelpMeSee

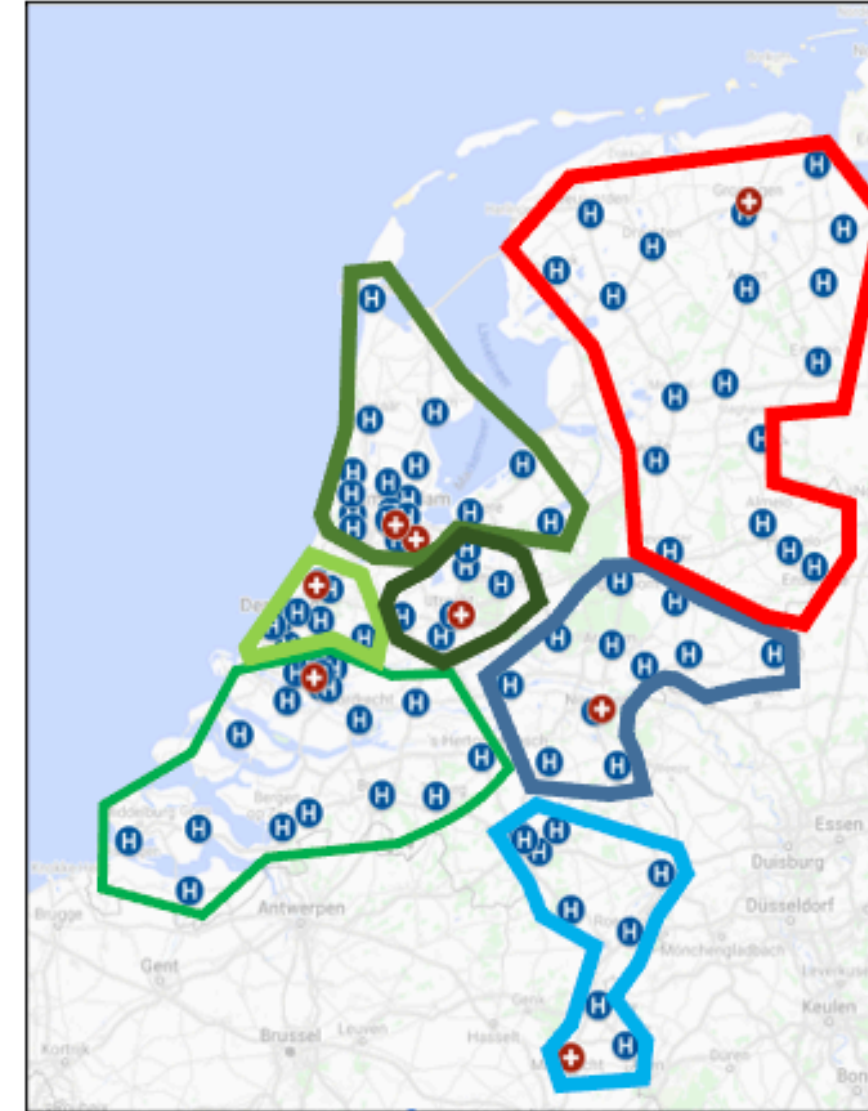
Helping the blind see.



MOOG



Chinese Research and Education Network
Supply Chain for PPEs



NL - ONCOLOGY NETWORKS
during COVID pandemia

GUIDELINE FOR SURGICAL MEASURES DURING CORONA CRISIS in NL



Principle:

- Trauma surgery, **Acute surgery** and Transplants for patients in a life-threatening situation or preventive supply **MUST** always go on.
- Advice per sub-association
 - Dutch association of GI surgeons NVGIC
 - Dutch association of Surgical Oncology NVCO



150,000 waiting for surgery

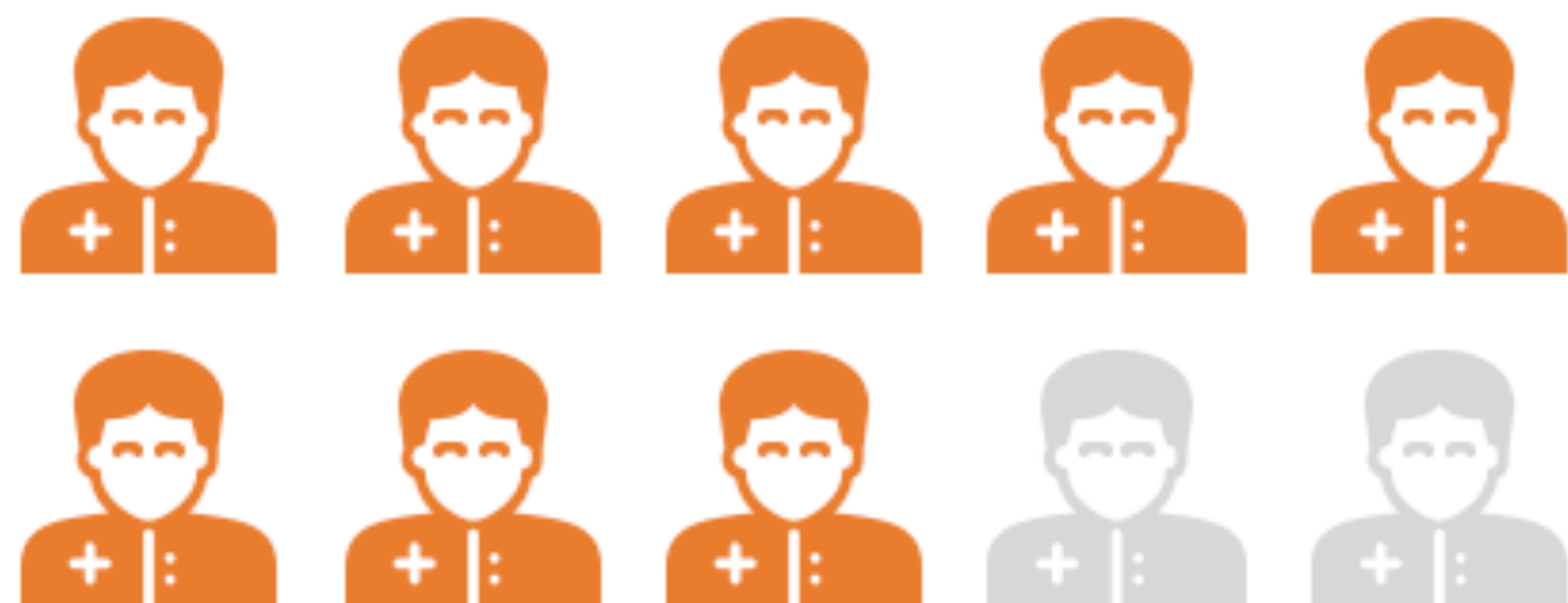


Amsterdam



Maastricht

The problem – the Netherlands



< 2019 (pre-covid)
14000 vacancies in healthcare
1,3 M people working in healthcare
Outflow healthcare workers: 113,000

> 2022
56,000 - 74,000 expected vacancies in healthcare
1,4 M people working in healthcare
Outflow healthcare workers: 120,000



Medical education currently depends on "Training on the Job"

