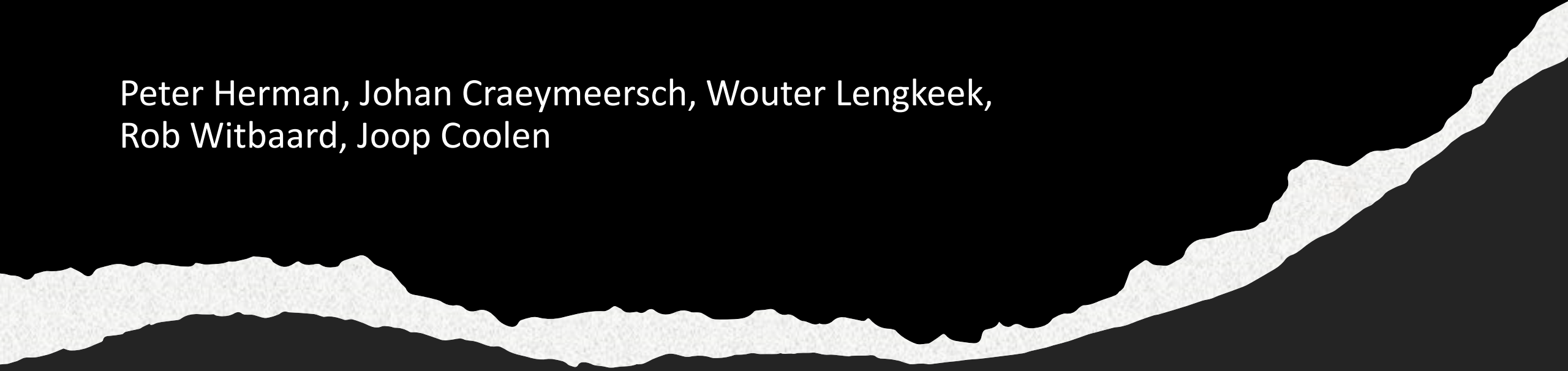
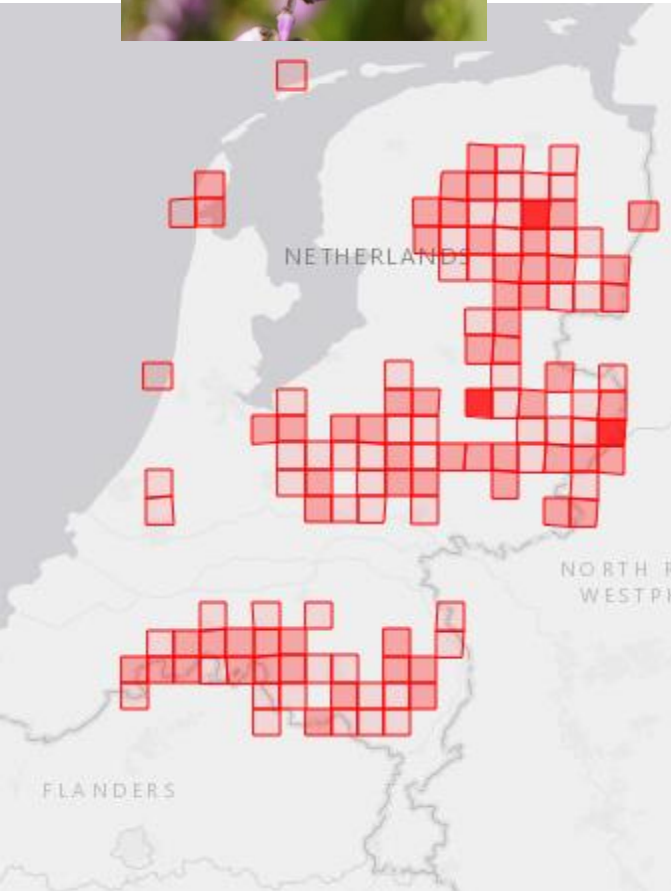


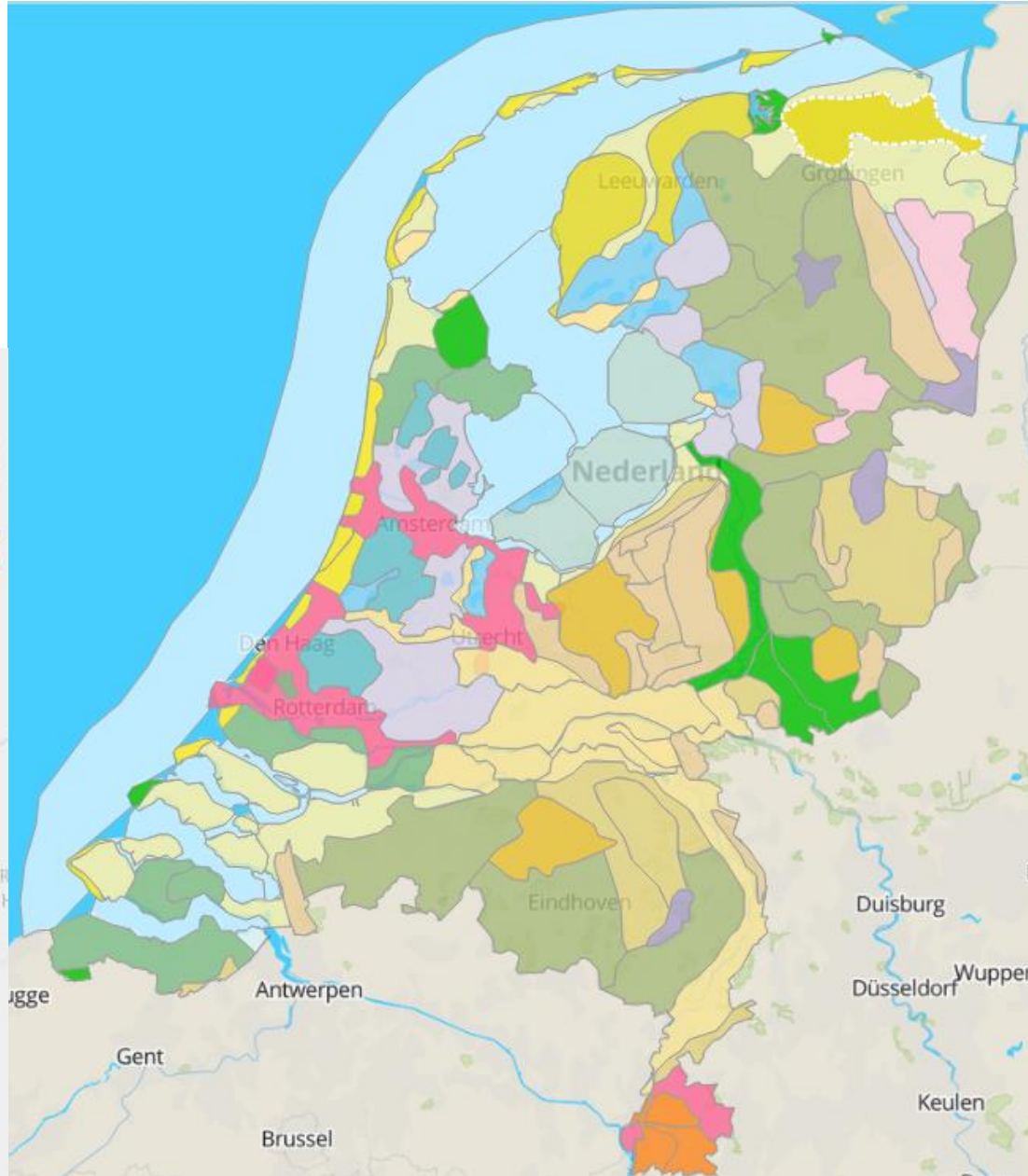
Noordzeebenthos

Peter Herman, Johan Craeymeersch, Wouter Lengkeek,
Rob Witbaard, Joop Coolen

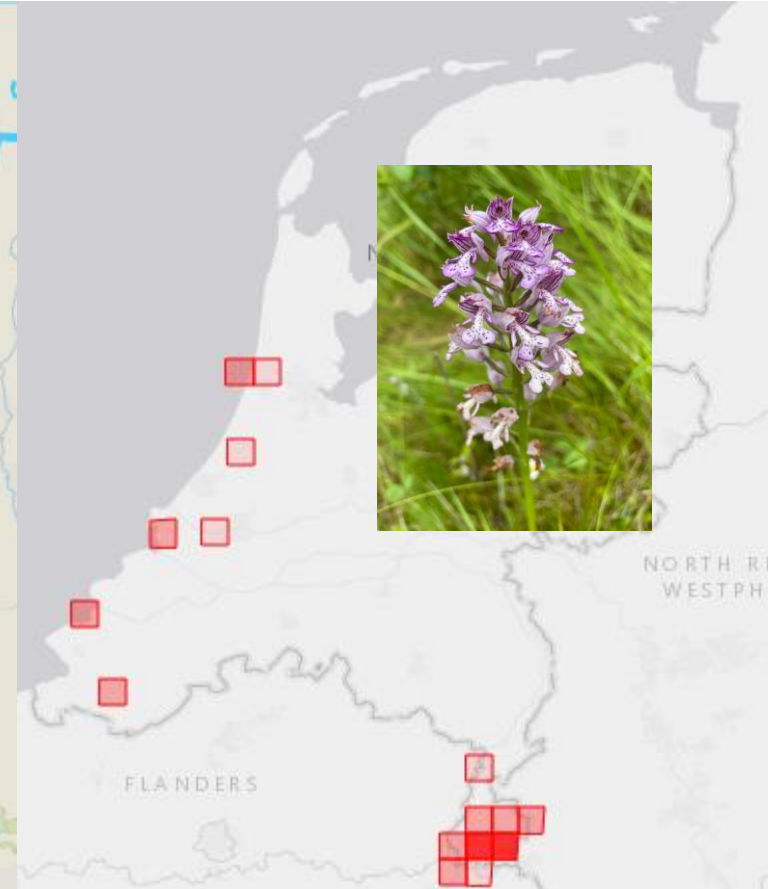




<https://waarneming.nl>

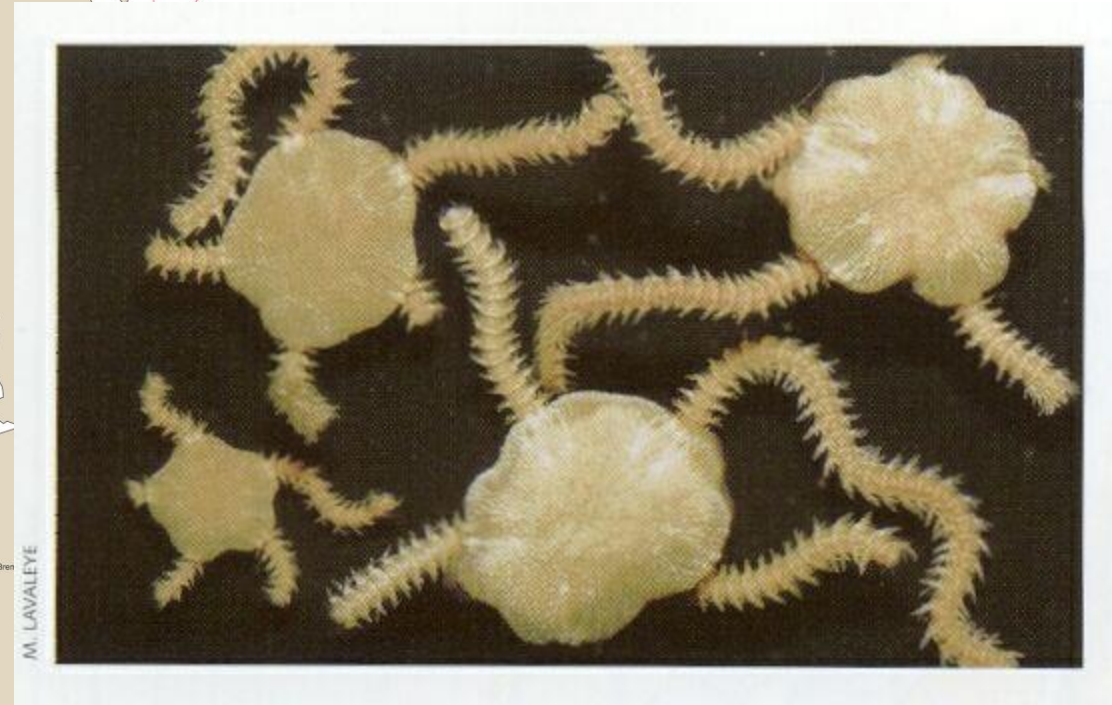
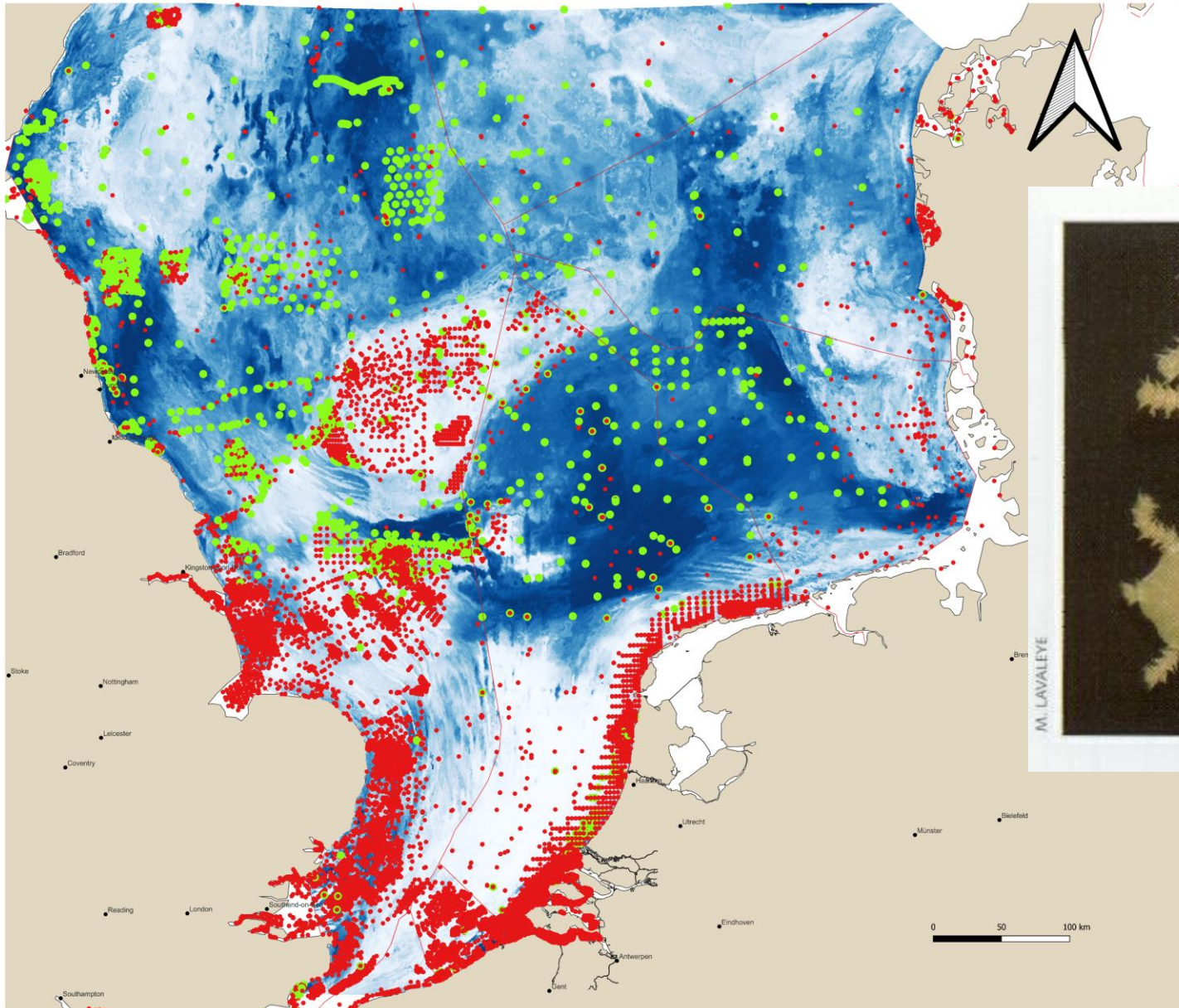


<https://www.topomania.net>



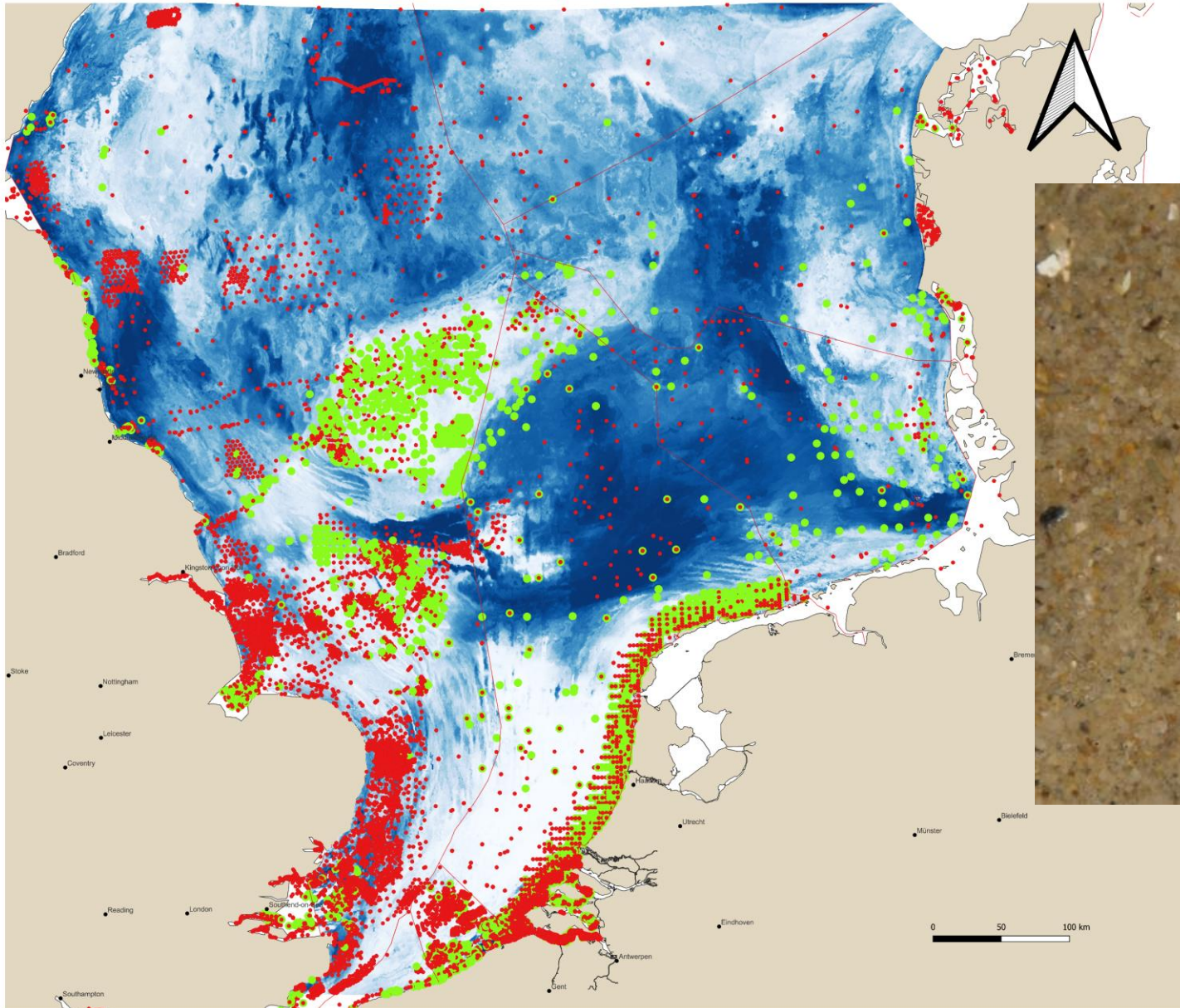
<https://waarneming.nl>

Amphiura filiformis / Mud content



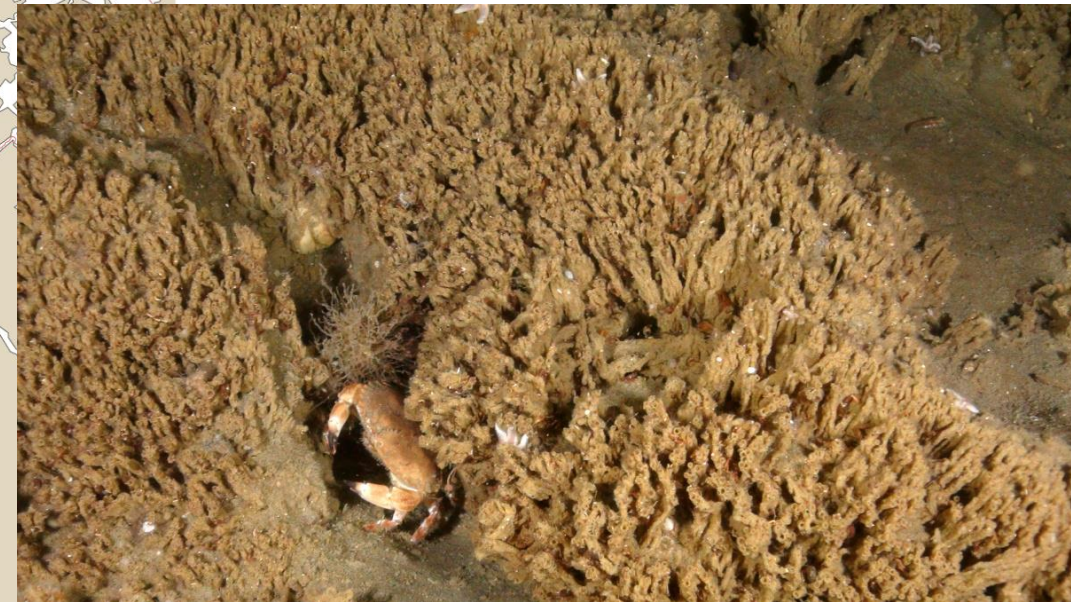
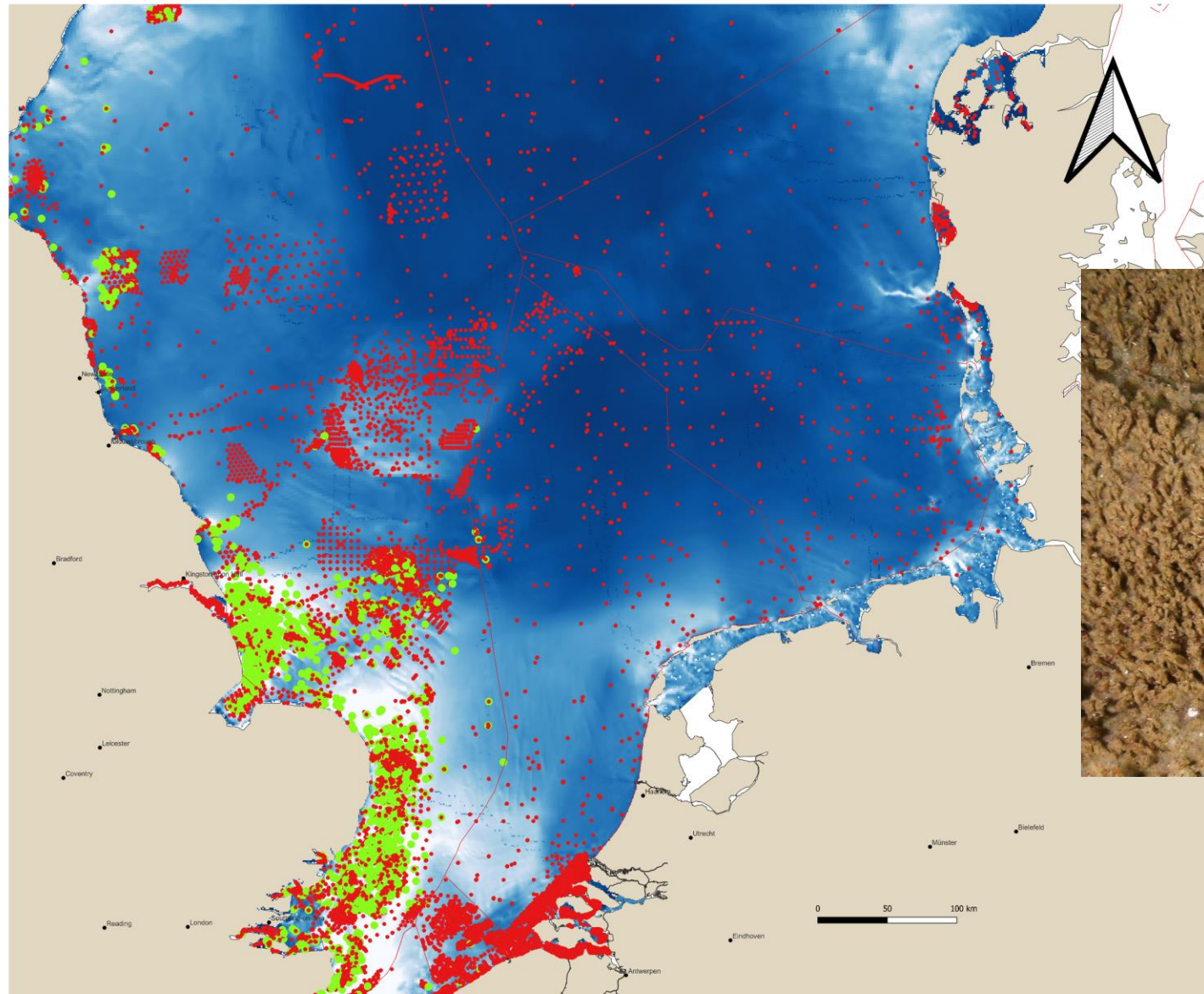
M. Lavaleye / WoRMS

Fabulina fabula / Mud content



M Decler / WoRMS

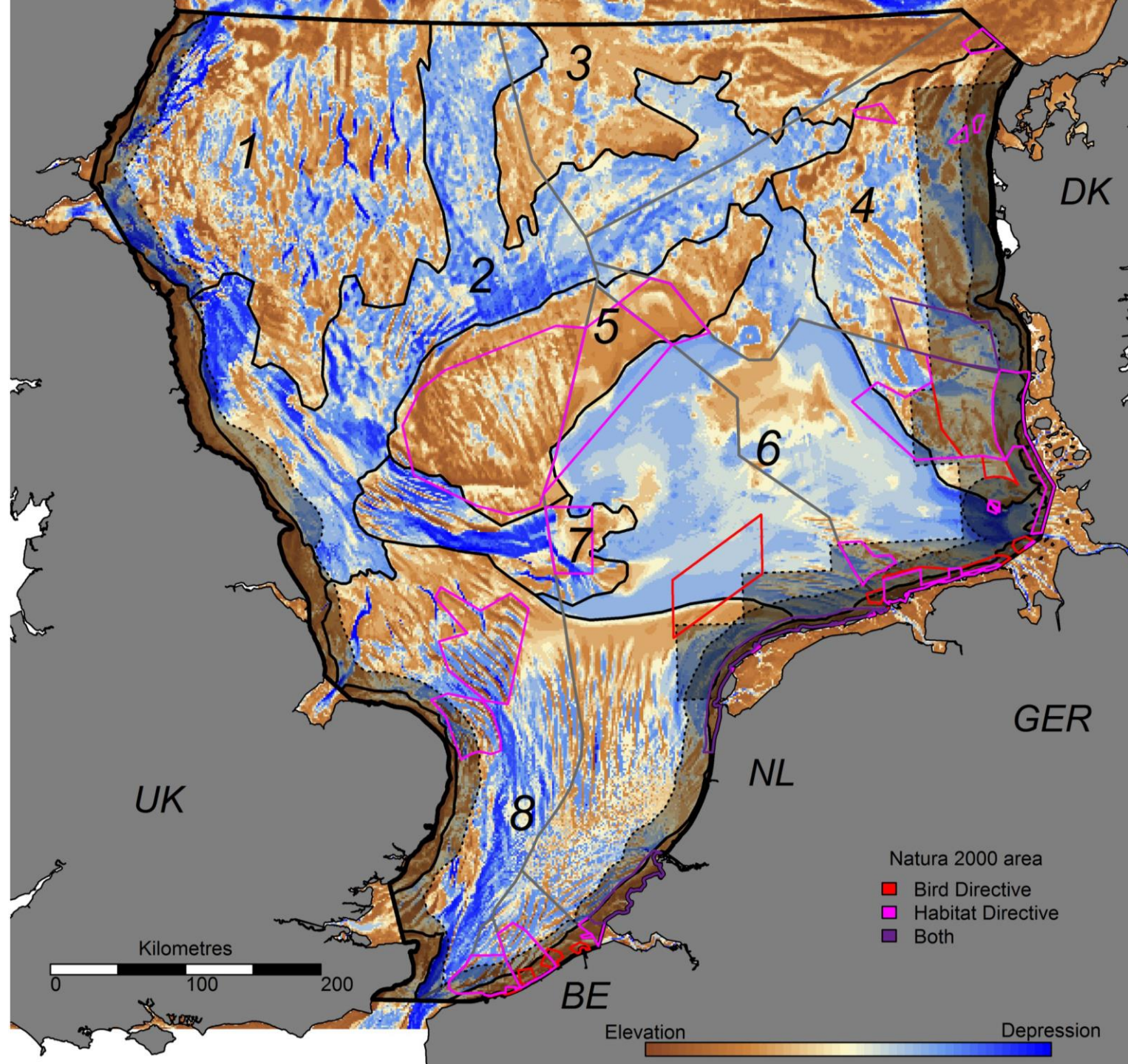
Sabellaria spinulosa / Bottom Shear Stress

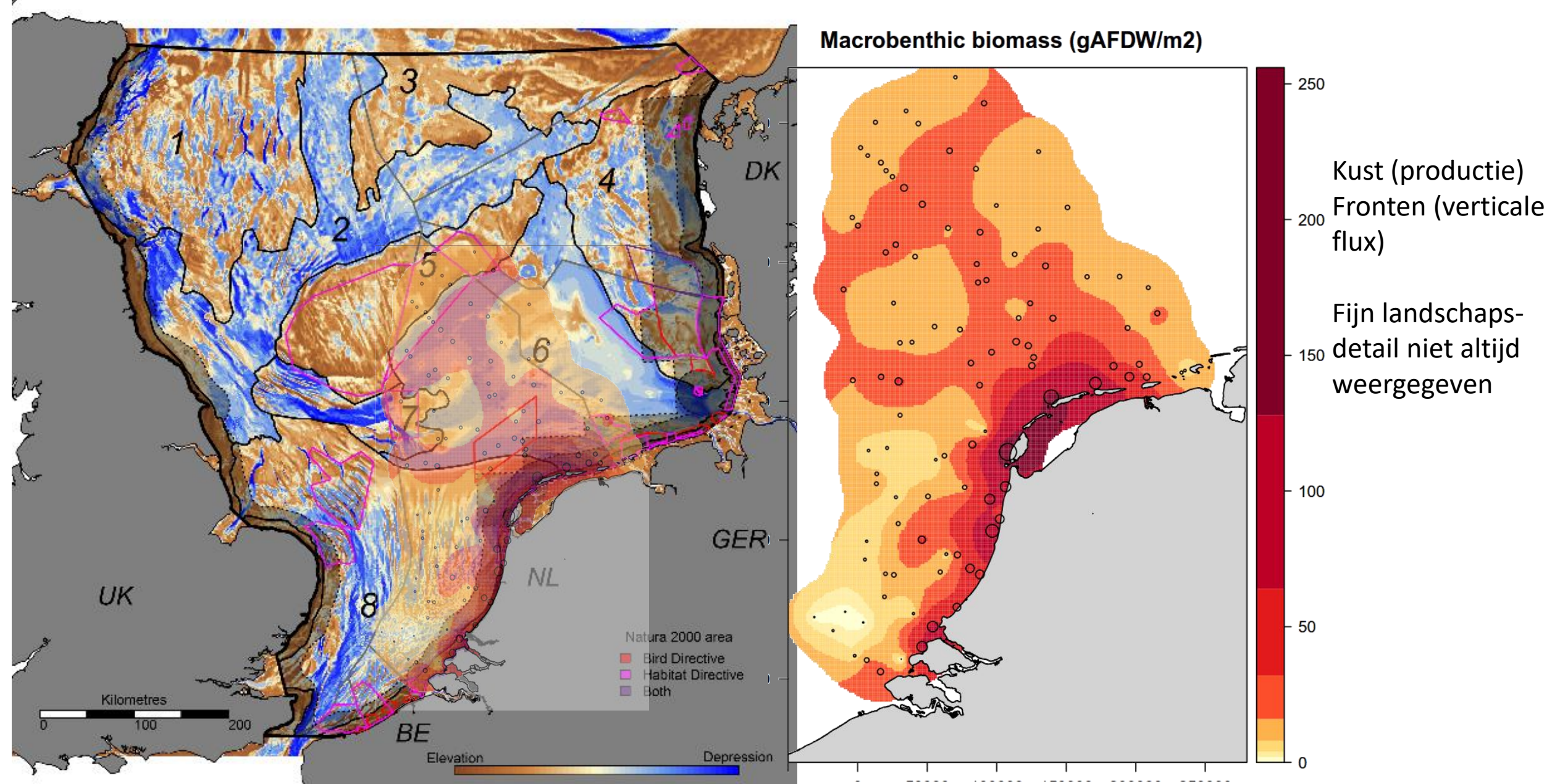


Oceana

Noordzee- 'landschappen'

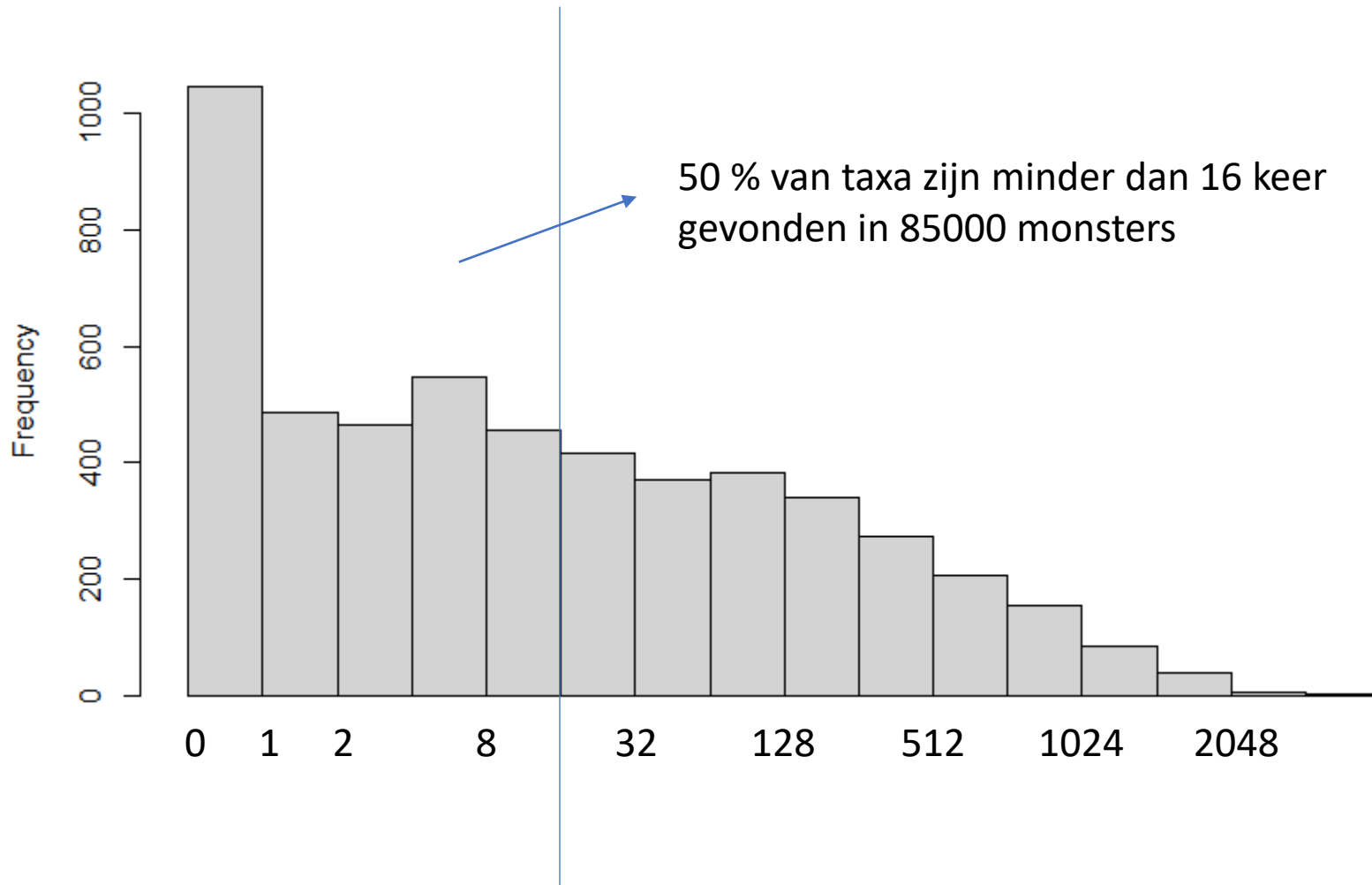
- 8 offshore types
- Talrijke kustgebonden types





Van der Reijden et al. 2018. PLOS One

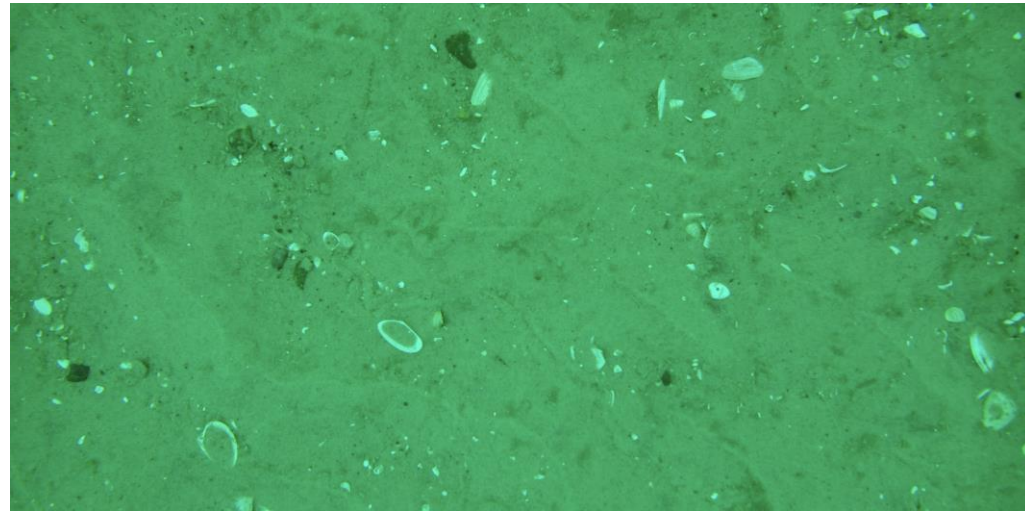
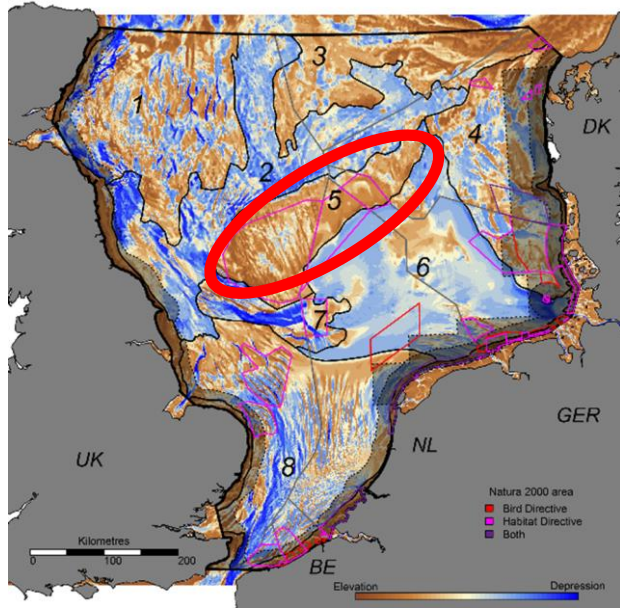
Frequentieverdeling van de 5281 taxa over 85266 monsters in EMODnet data set



Bepalende factoren

- Natuurlijke eigenschappen van het landschap: fysica, geologie, ecologie
- Verstoring:
 - Bodemberoerende visserij
 - Verandering substraat
 - Eutrofiëring / vervuiling

Doggerbank

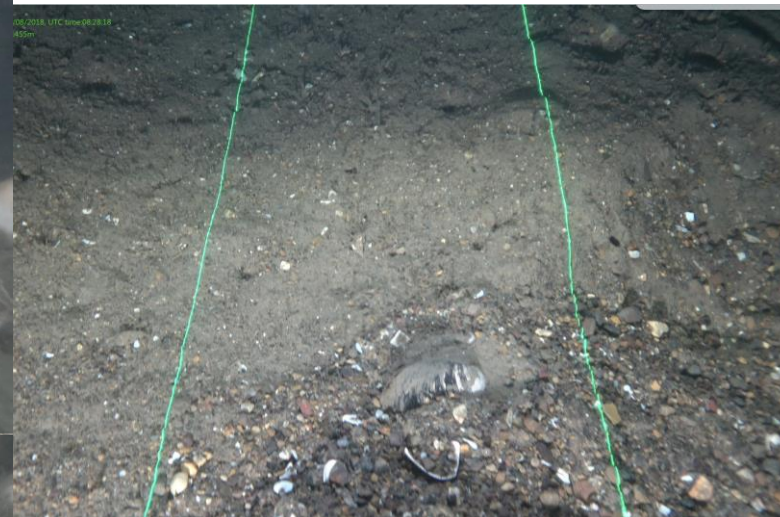
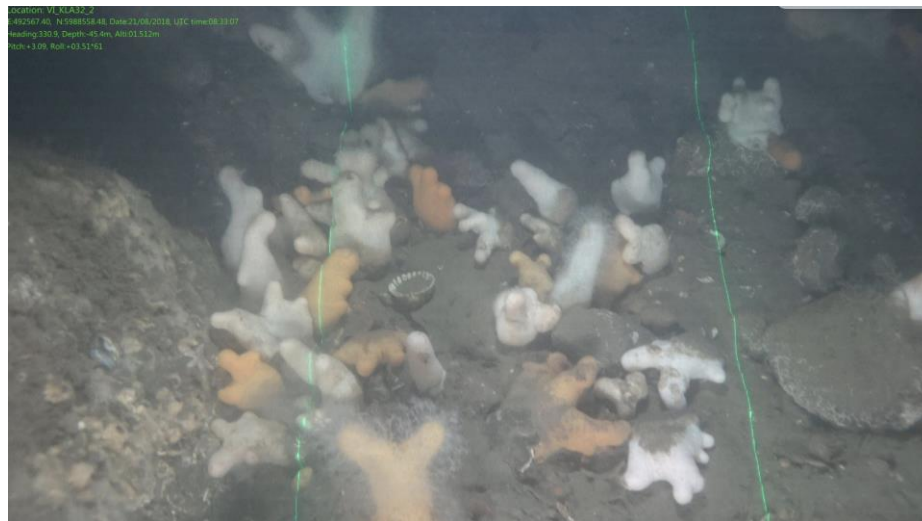
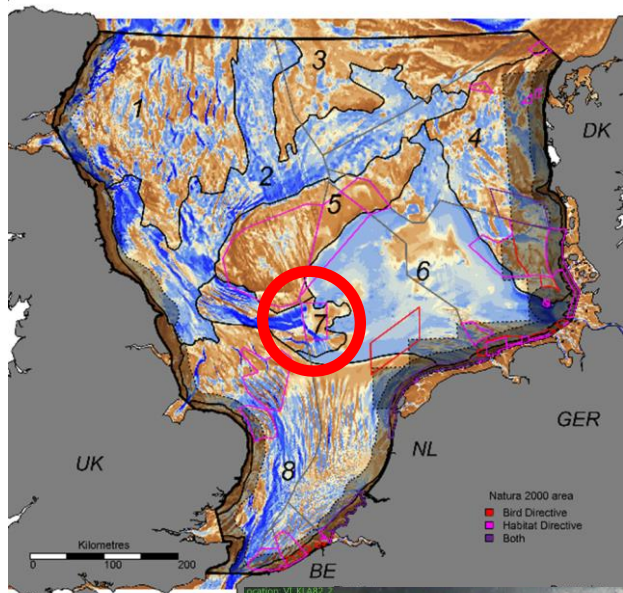


Wouter Lengkeek - BuWa

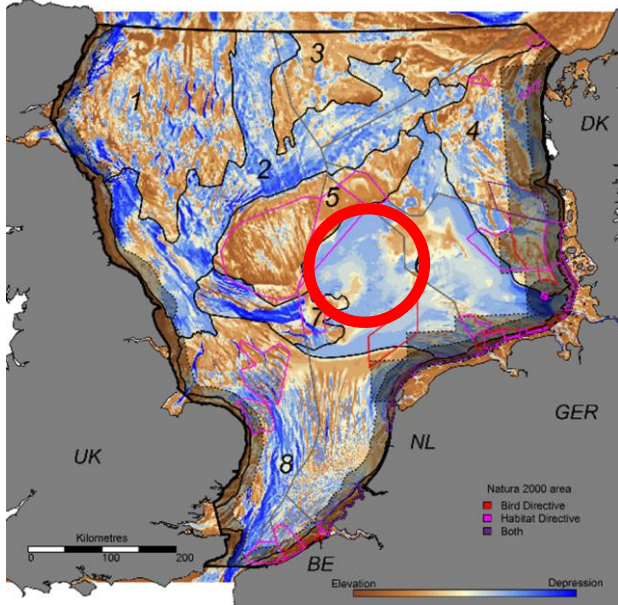


Wouter Lengkeek - BuWa

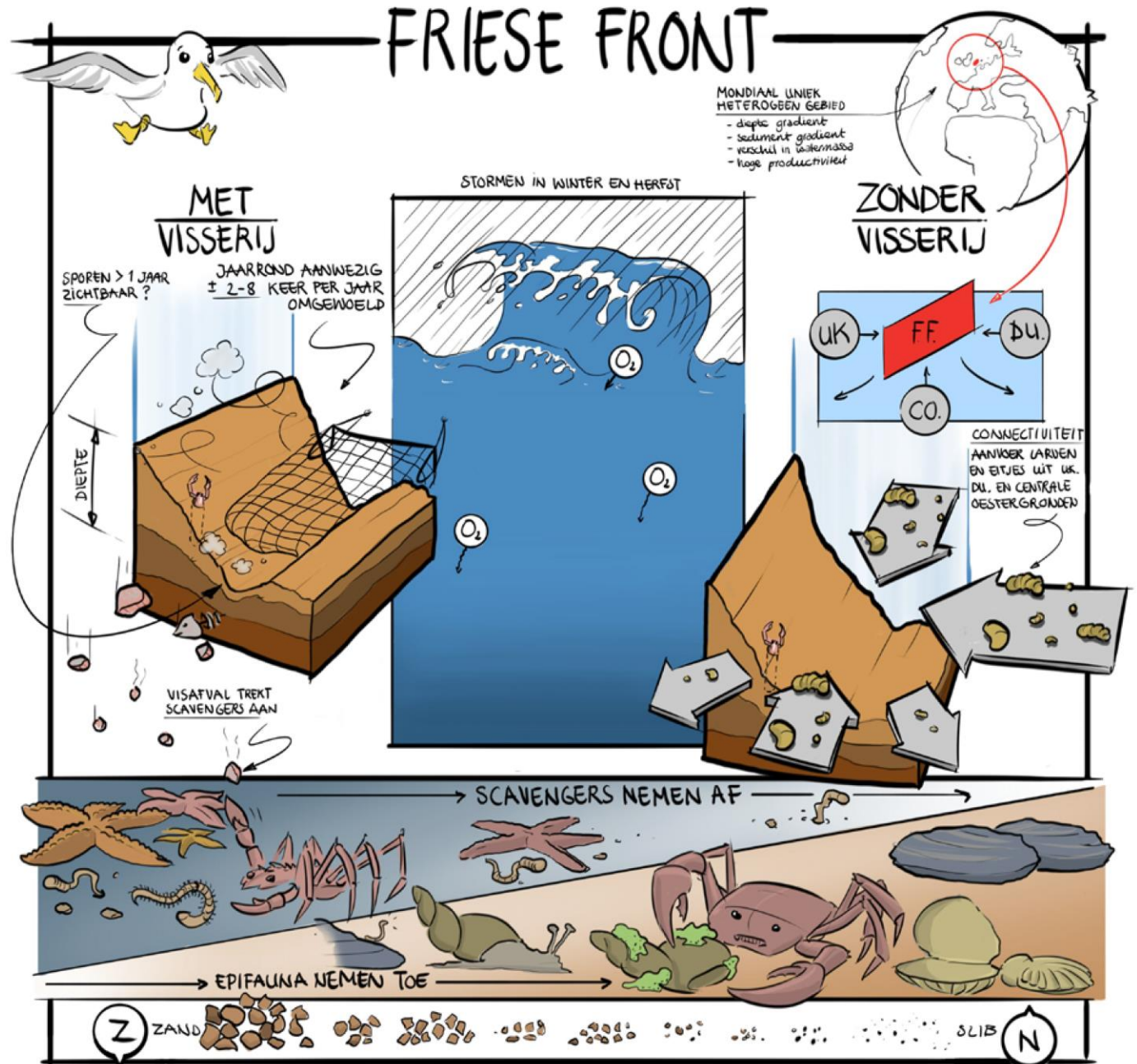
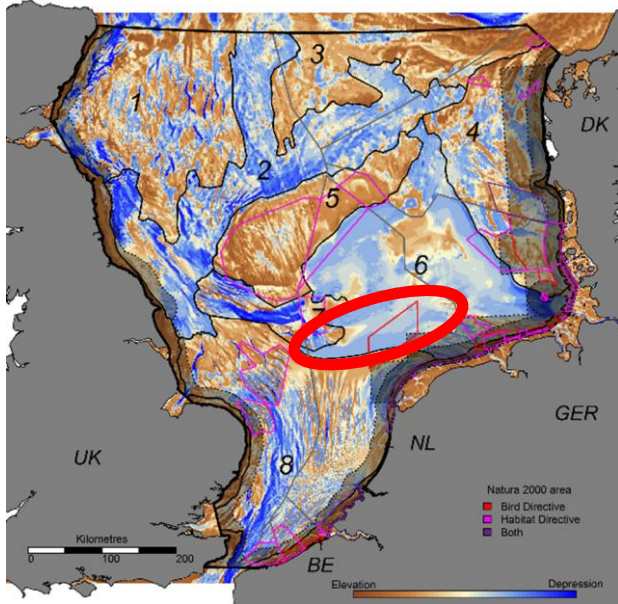
Klaverbank



Oestergronden

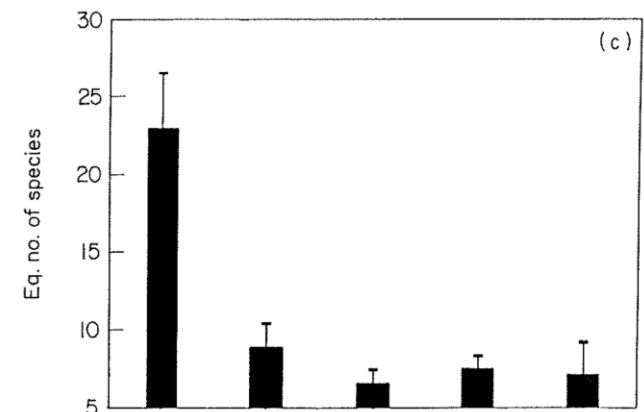
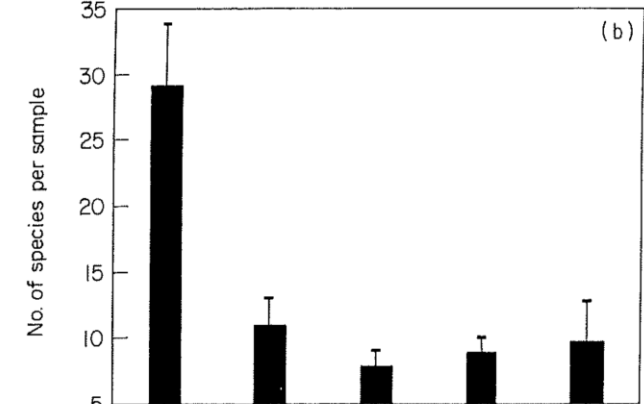
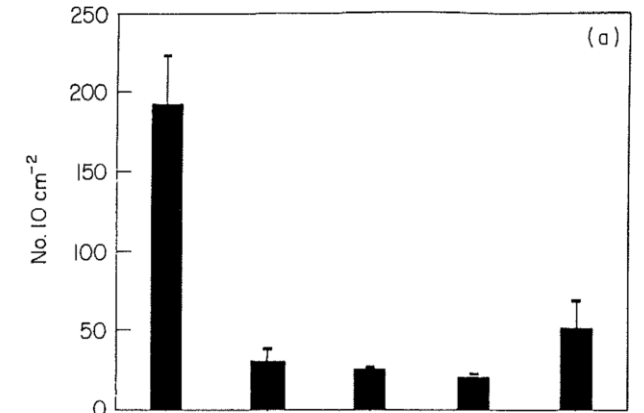
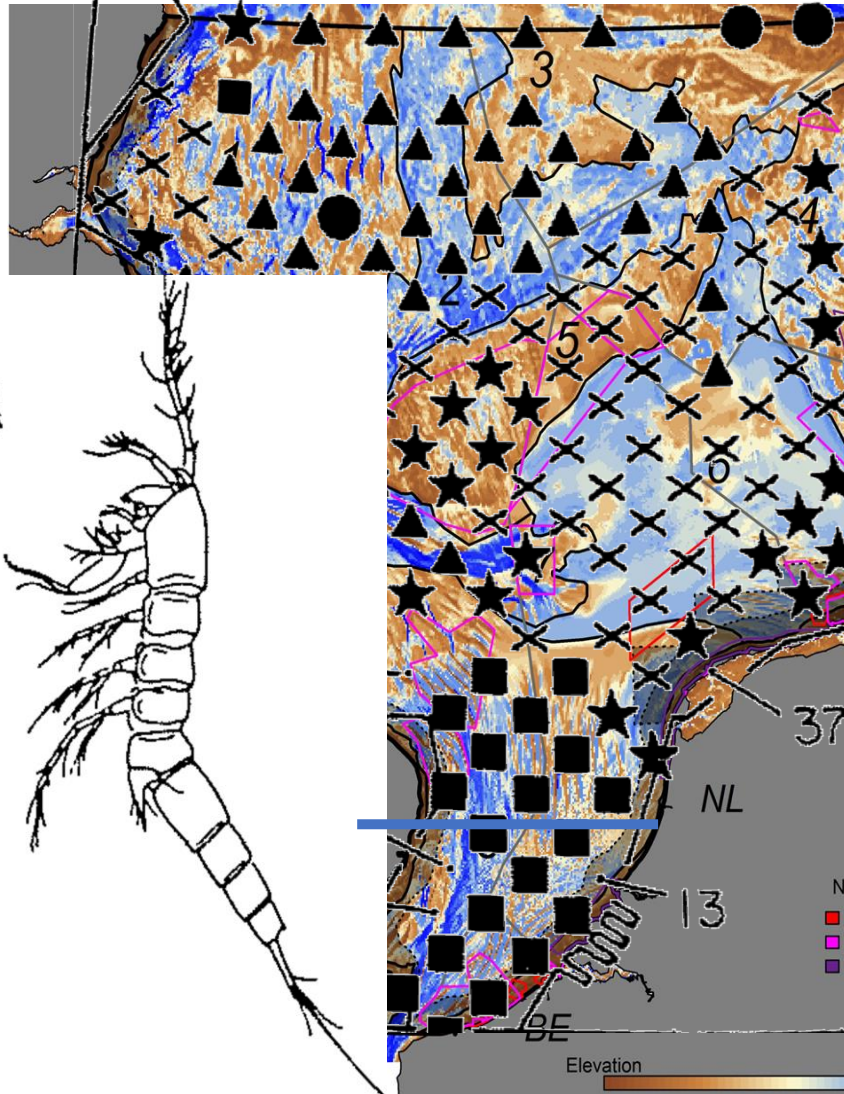
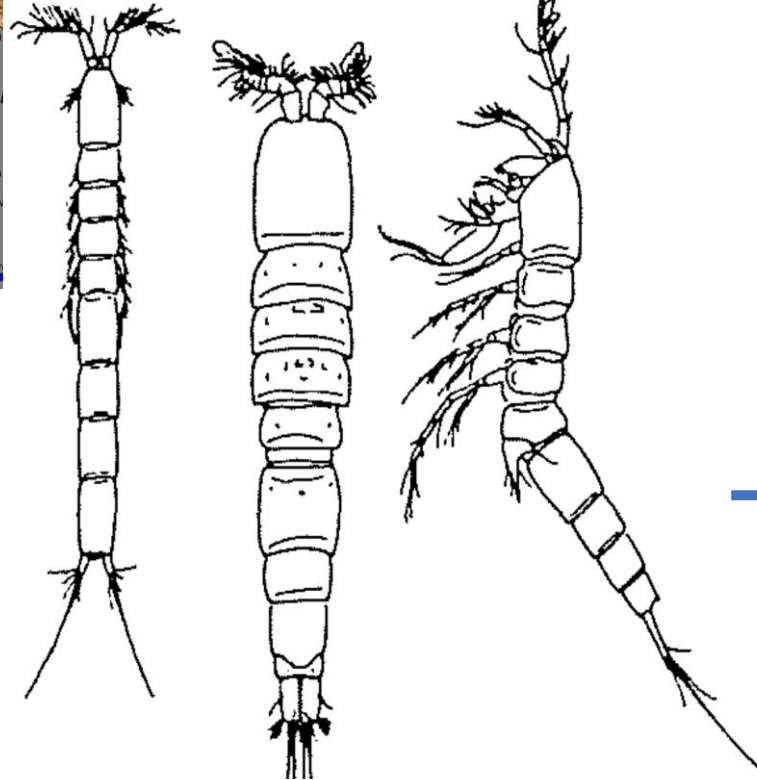
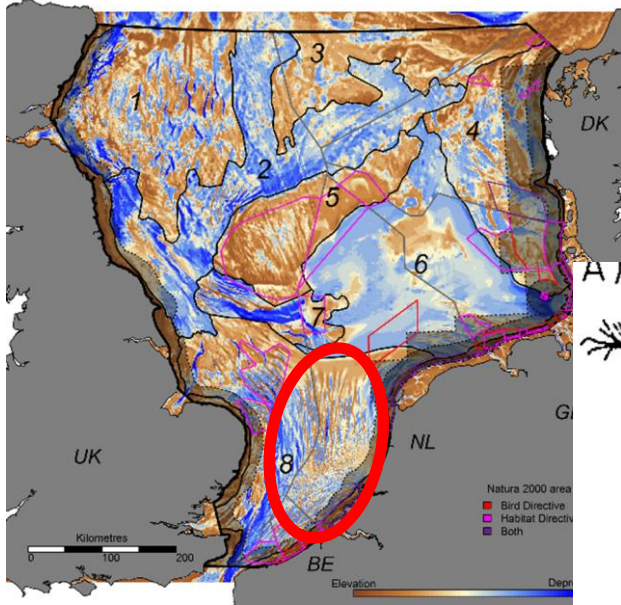


Friese Front

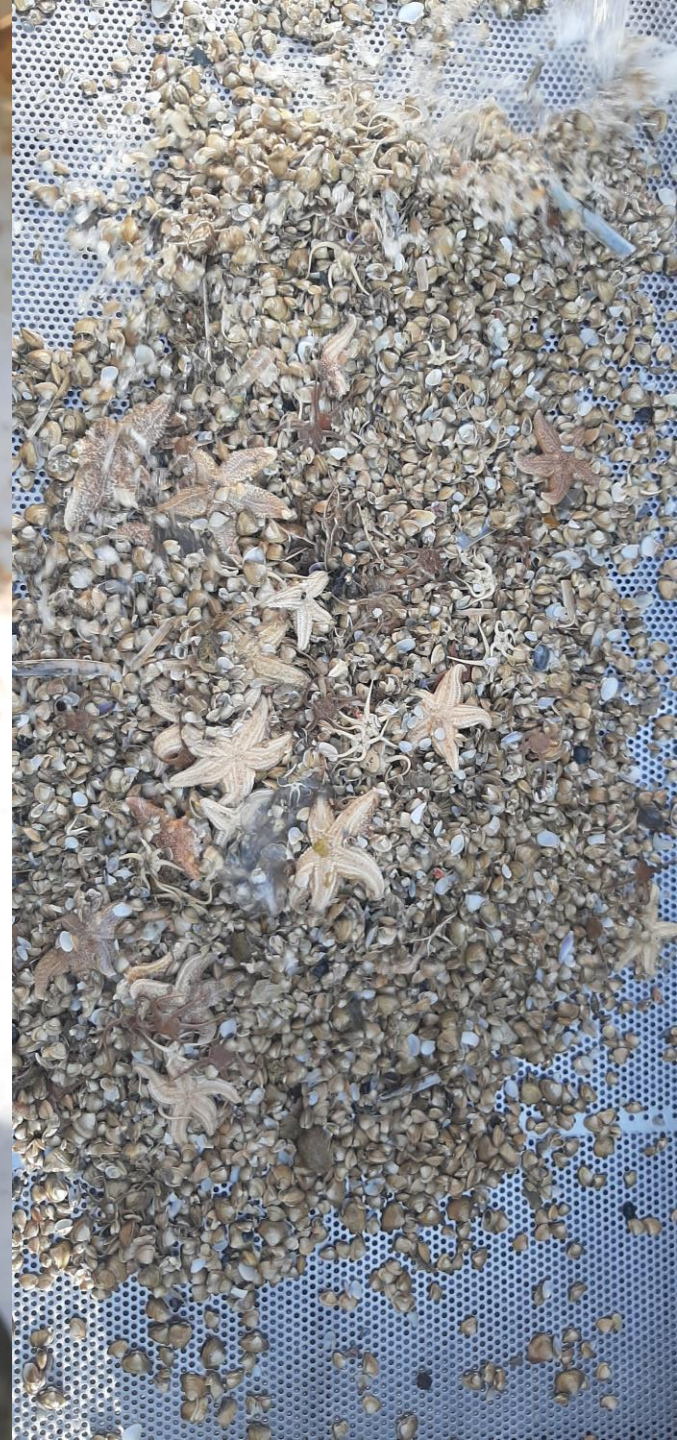
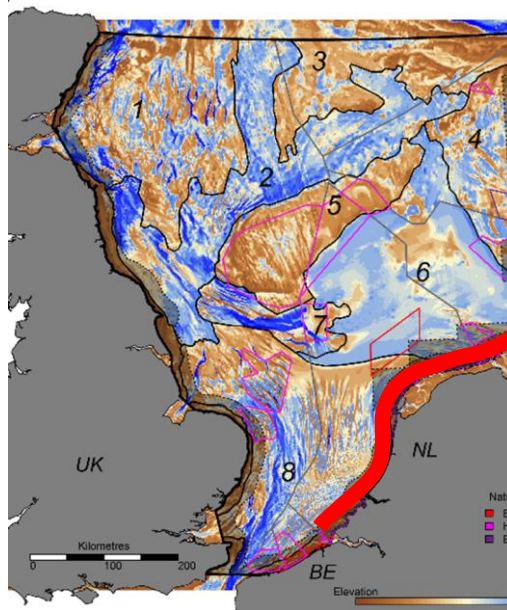


Jongbloed et al. 2013 WUR rapport. Tekening Tommy Tol (JAM visueel denken)

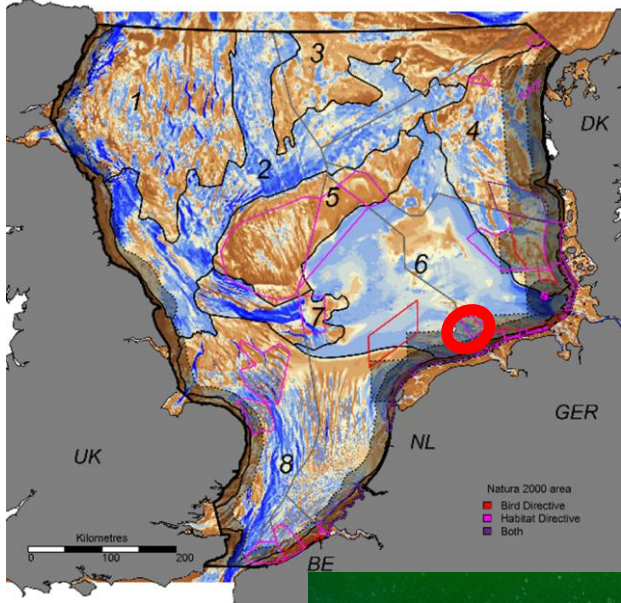
Zandgolvengebied (Breeveertien)



Kust

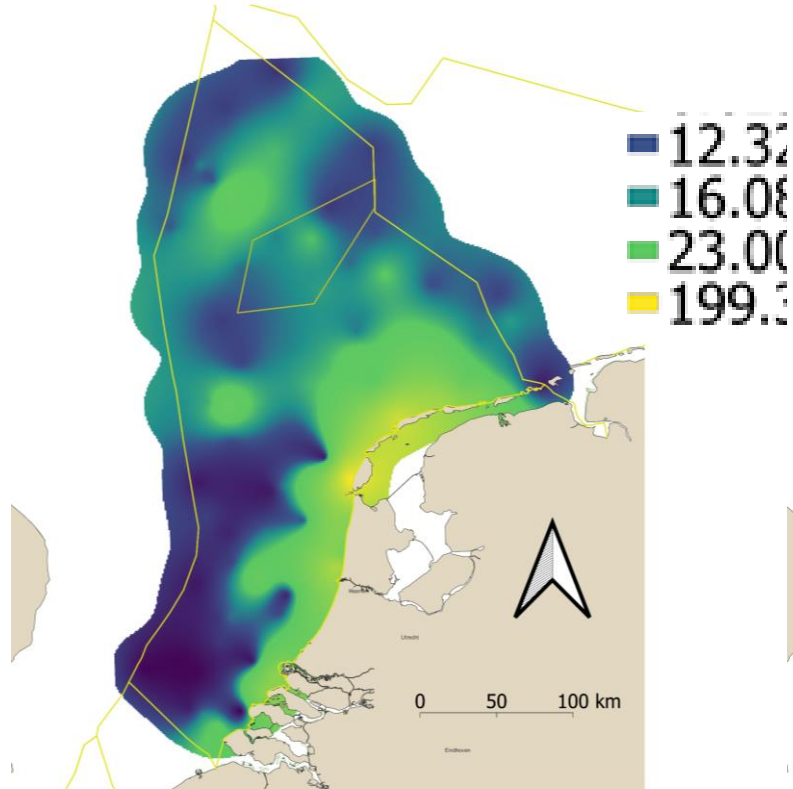


Borkumse Stenen

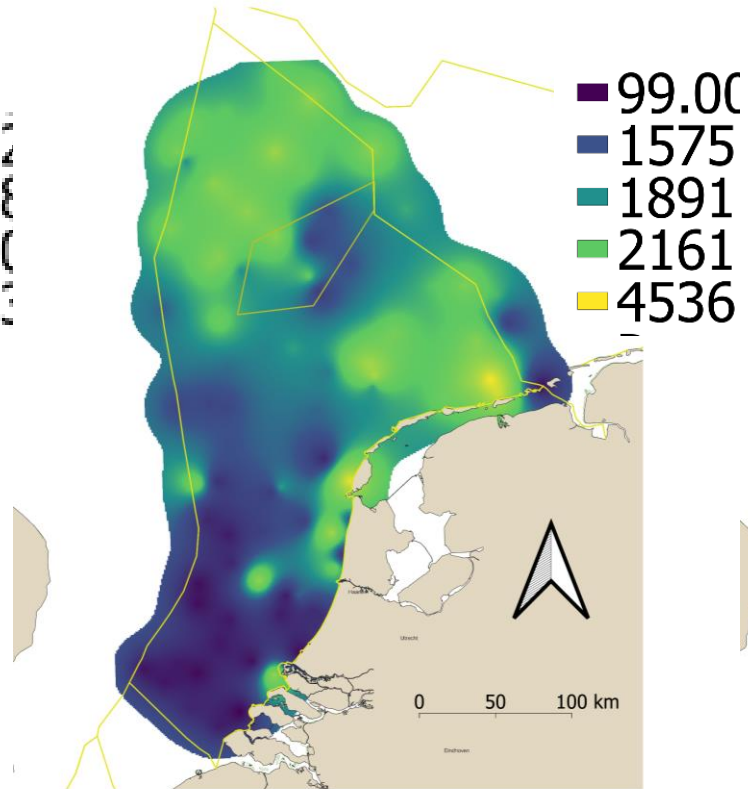


Gemeenschapskenmerken

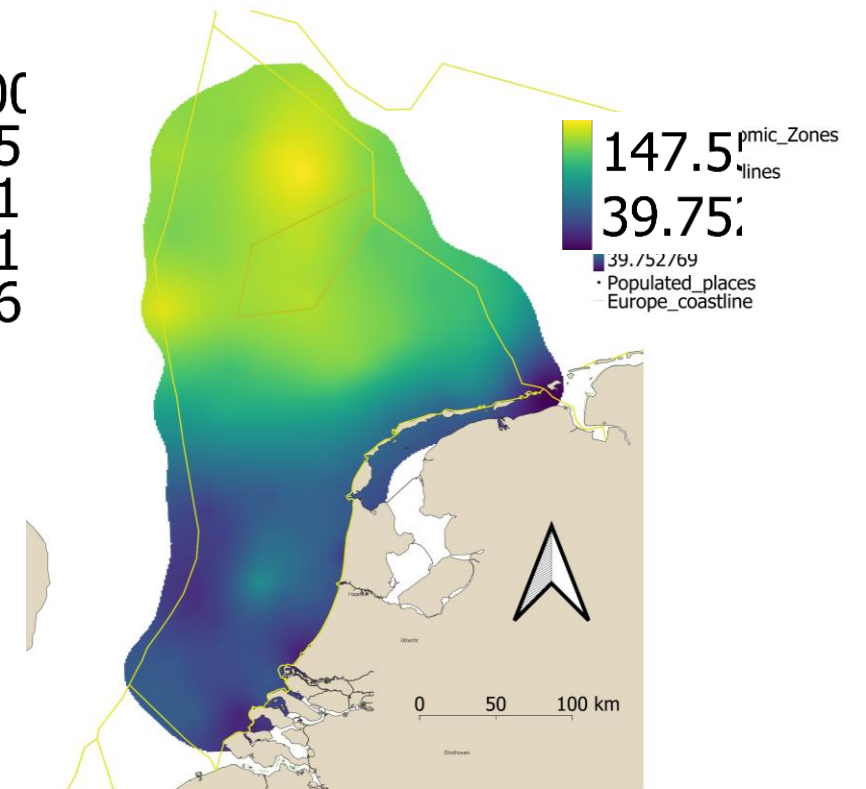
Biomassa (gAFDW m⁻²)



Dichtheid (n.m⁻²)



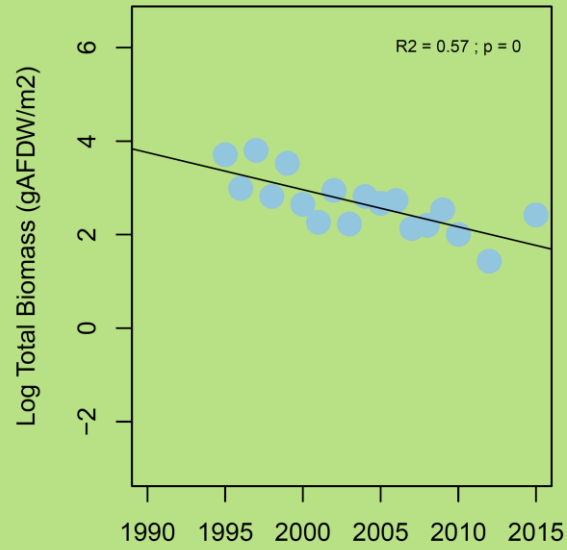
Aantal soorten in station over 25 jaar



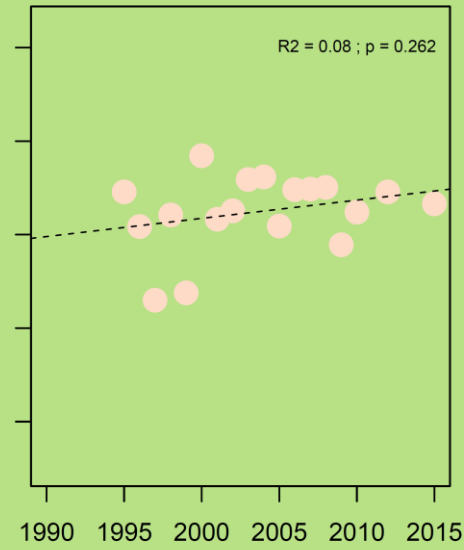
Gebaseerd op MWTL boxcore data – eigen berekening

Trends in Biomassa

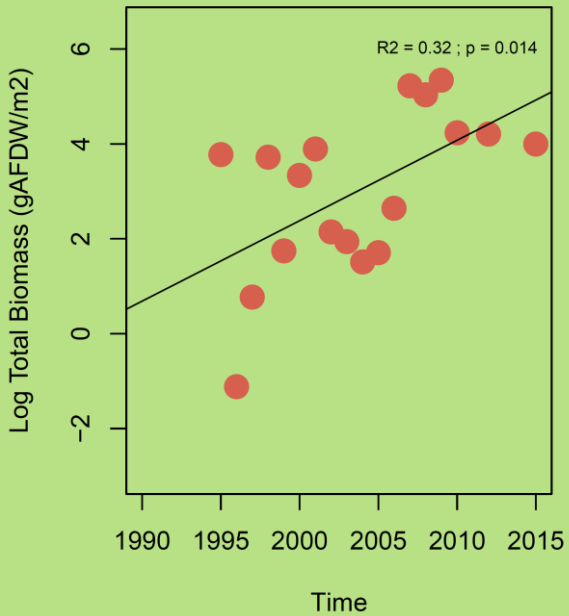
TERSLG100



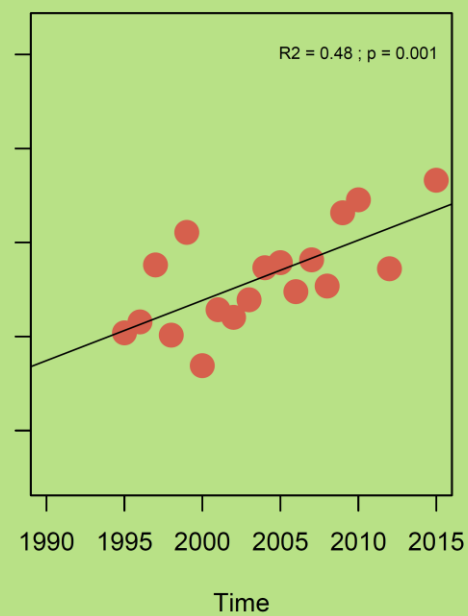
OESTGDN22



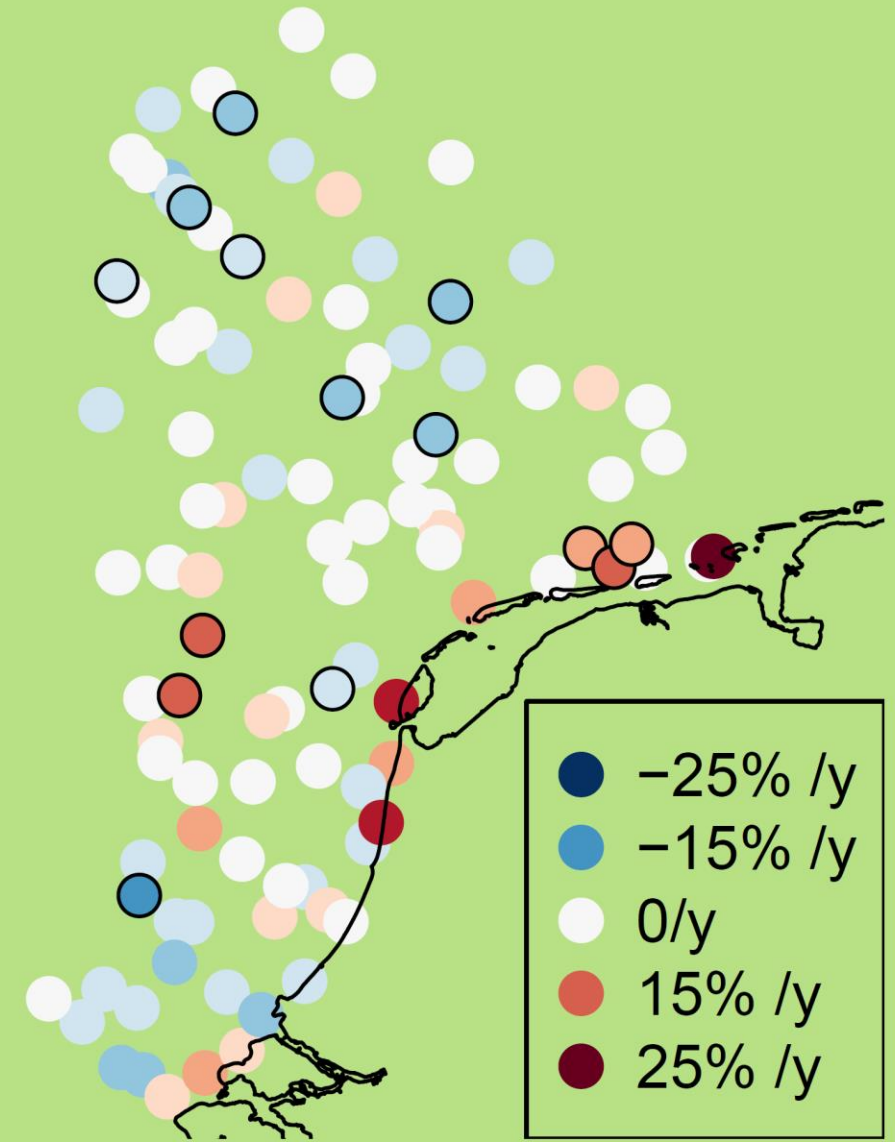
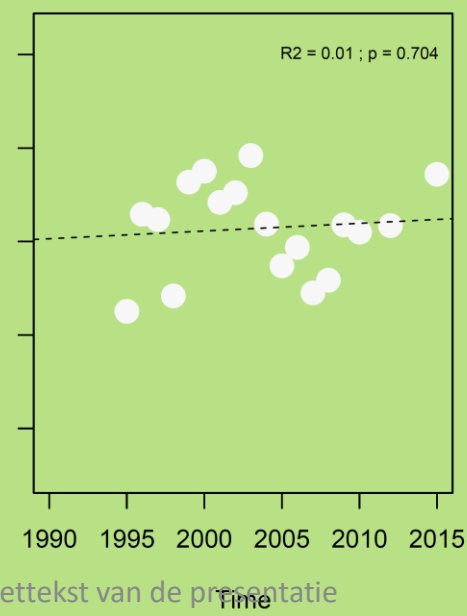
WADDKT03



BREEVTN09



BREEVTN07



Conclusies

- Biodiversiteit kent meerdere schalen:
 - Diversiteit op *landschapsniveau*: tussen maar ook binnen landschapstypes
 - Diversiteit op soortsniveau binnen een habitat
 - (Diversiteit op populatie- en genetisch niveau)
- Er is cumulatieve schade aan het bodemdierleven:
 - Fysische verstoring van de bodem
 - Wegnemen organismen, hun prooien of hun predatoren
 - Wegnemen en toevoegen van hard substraat
 - Eutrofiëring en vervuiling
- Ecologische restauratie moet:
 - Iets doen aan oorzaken van achteruitgang
 - Rekening houden met het landschap of falen