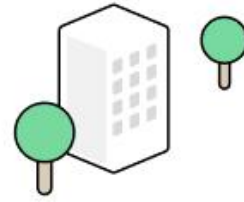


Smart buildings



Rowan de Bruin

Smart Office Advisor &
Workplace Enthusiast
at Mapiq



Good morning ☀️
See you soon!

+6

Amsterdam office ▾

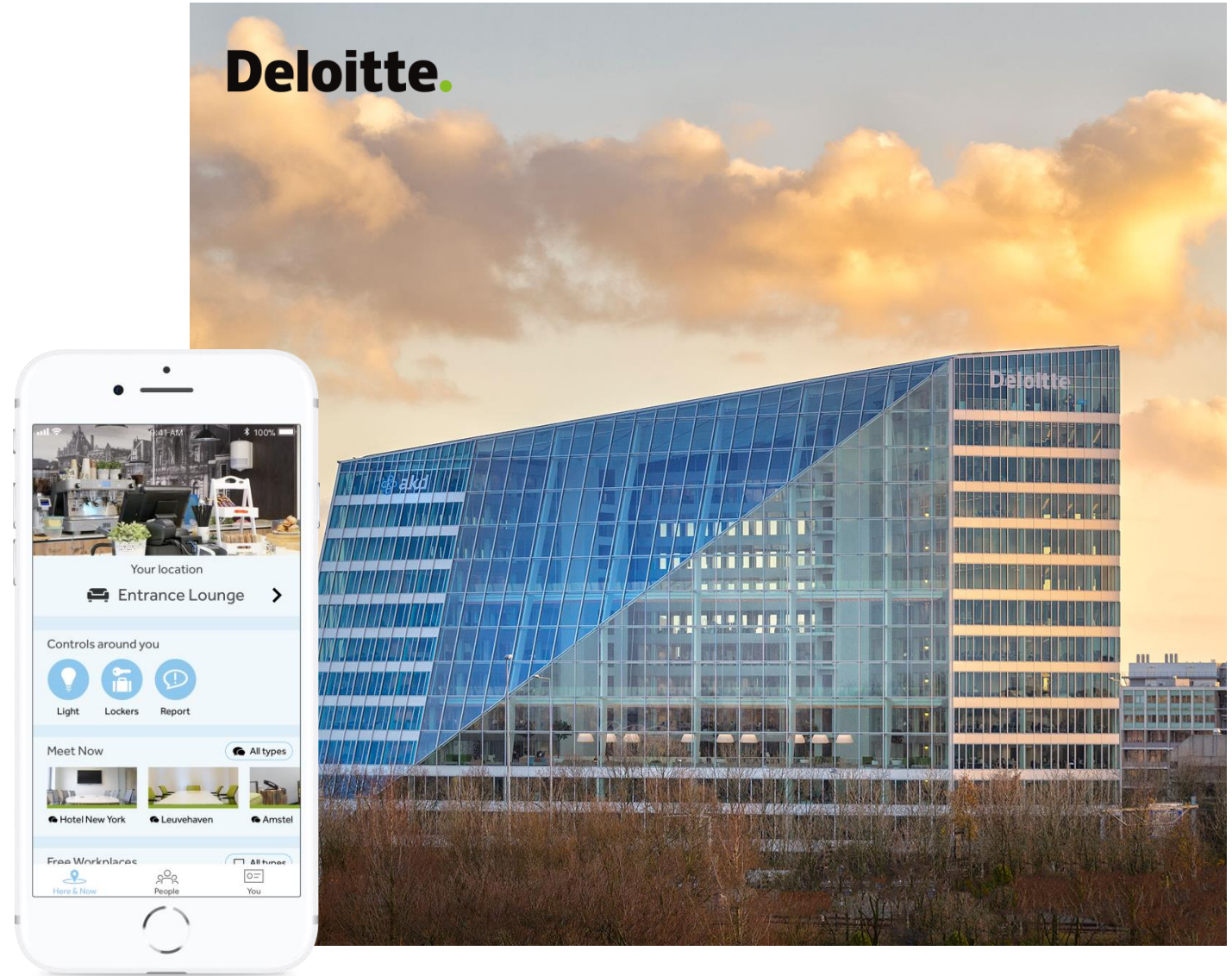
Parking (+)

Desk (+)

Lunch (+)

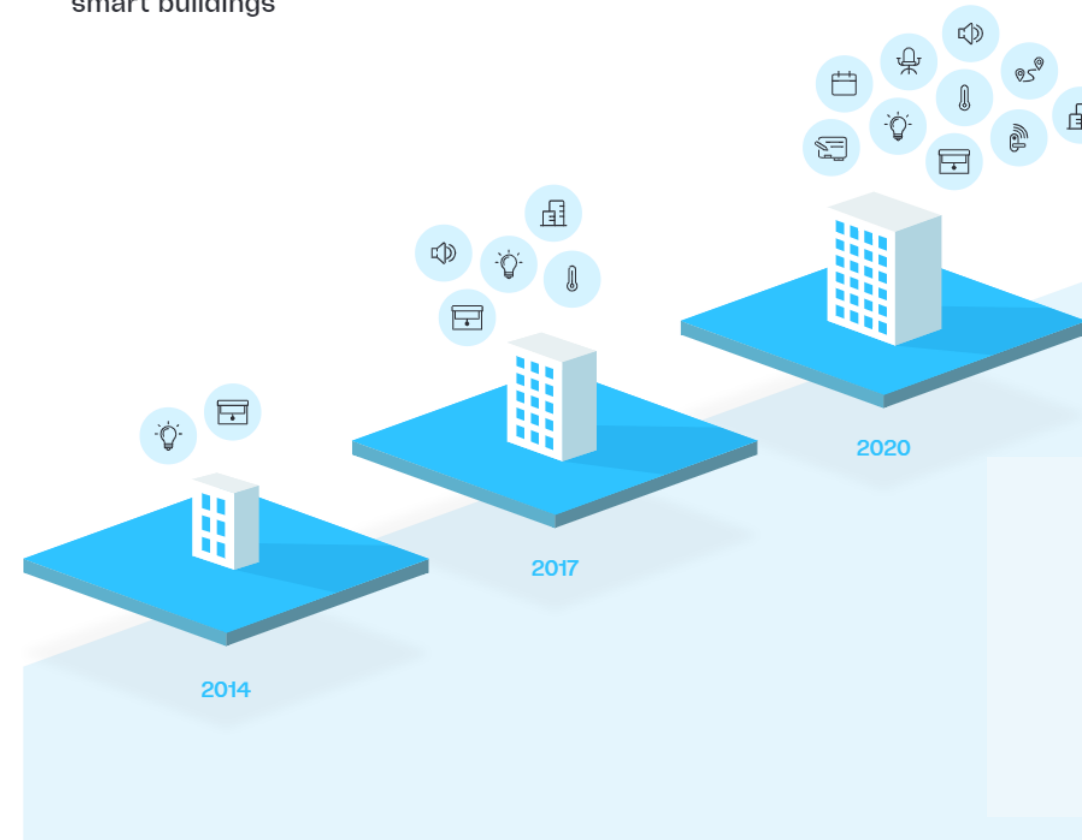
A small icon of a building and trees, similar to the one in the top left, positioned at the bottom right of the interface.

2014

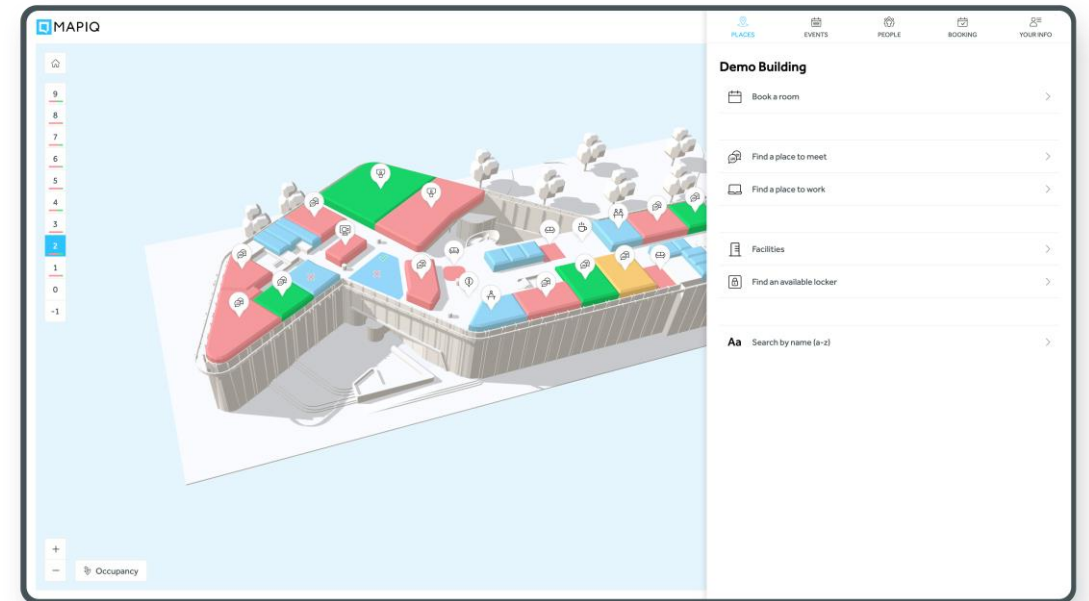
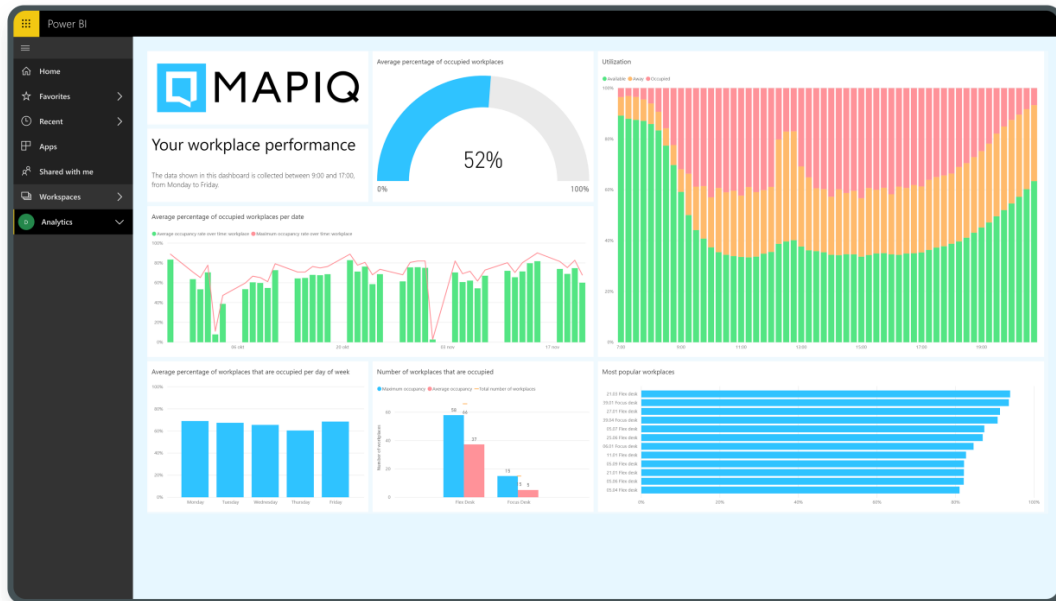


Een slim kantoor bestaat uit een reeks technologieën die gebruikers verbinden met het gebouw en de bestaande IT-infrastructuur

The evolution of smart buildings

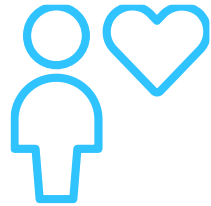
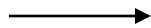


Mapiq smart office platform



Wat is een smart building?





Real estate optimization

Supporting the demand of your employees in the new dimension of the hybrid workplace,

Maintaining well-being

Supporting employees' needs through a responsible approach

Fostering culture

Without physical collaboration, employees may lack connection to their workplace

Reuniting teams

Organizations struggle to attract employees back to the office

BUSINESS

ABN in te

Goldman Sachs buys into £500 million 'Paris-proof' London Bridge office development

of

VIEW COMMENTS



News article



A mock-up of how the new EDGE London Bridge development will look / EDGE



The war for talent

60%

College graduates

come from the top emerging markets.

Nr. 1

Needed skill:

complex problem-solving

37%

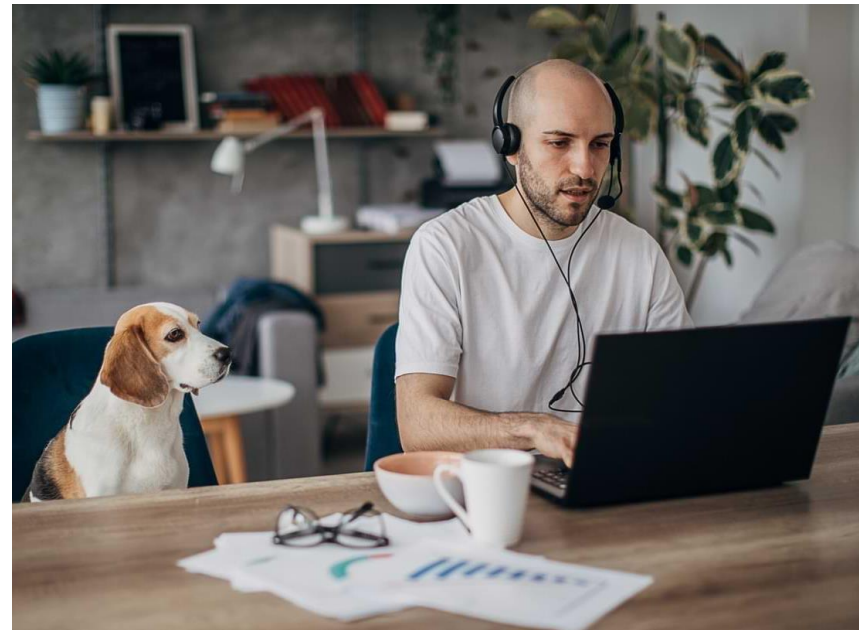
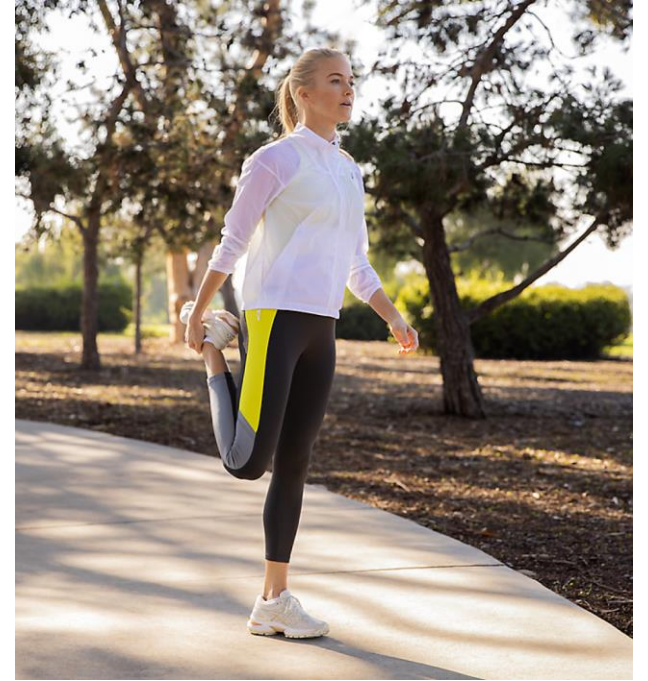
Leesman respondents

are likely to use the workplace for less than a day per week.



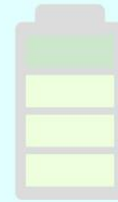
De autonomie om
waar en wanneer te
kunnen werken.

Mensen zijn gewend
geraakt aan flexibiliteit
en vrijheid – en ze
genieten ervan!

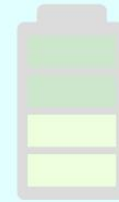


Decision fatigue
is real..

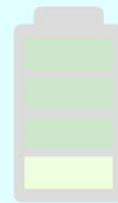
DECISION FATIGUE (EXAMPLE)



5 DECISIONS 
IN A DAY



10 DECISIONS 
IN A DAY

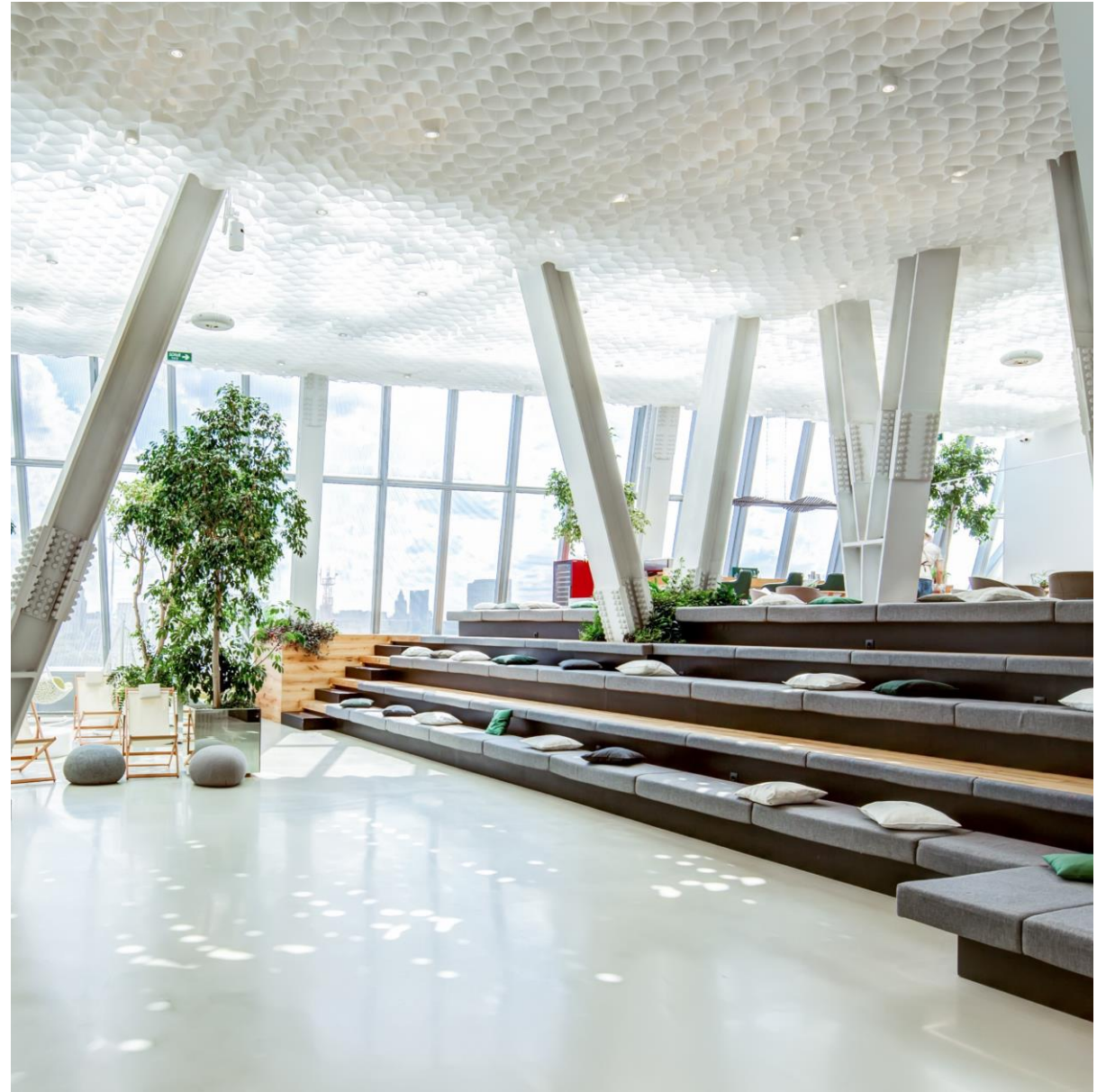


20 DECISIONS 
IN A DAY

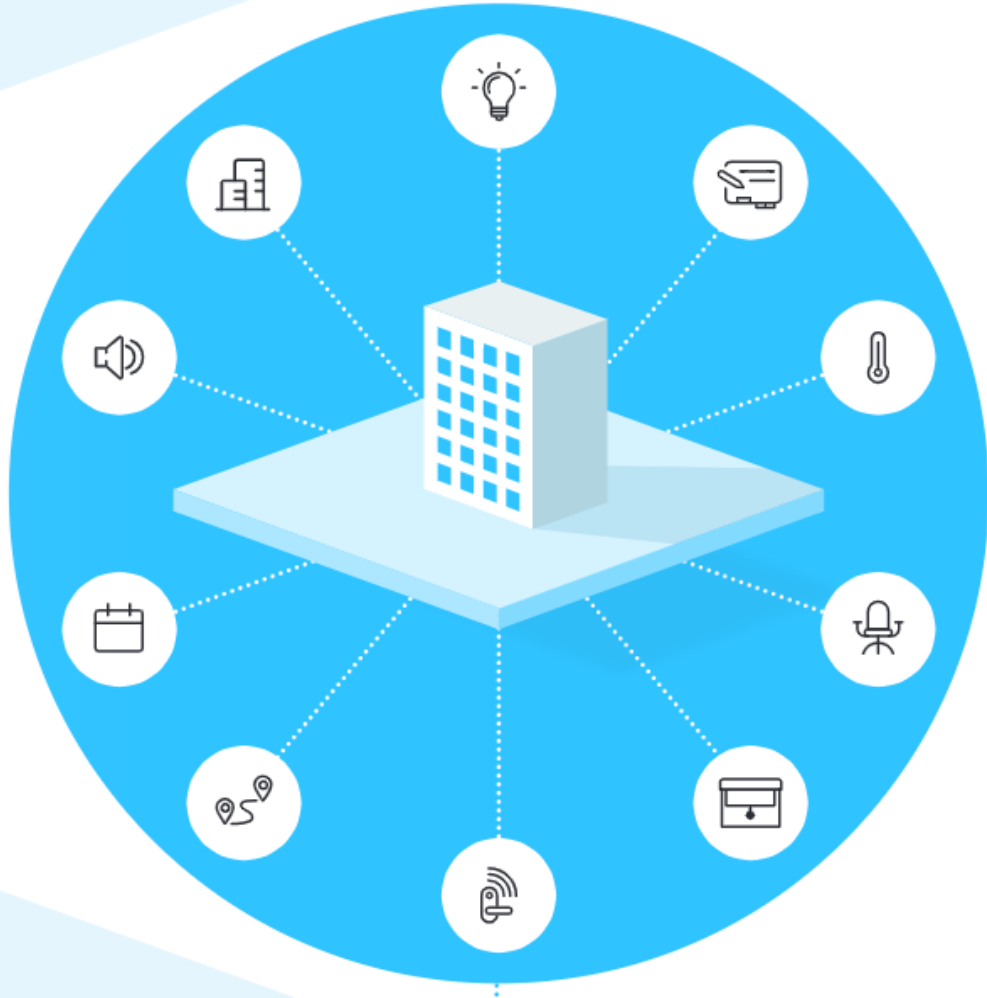


30 DECISIONS 
IN A DAY

Onzekerheden over
de werkplek
weerhouden mensen
ervan om terug te
keren naar kantoor.







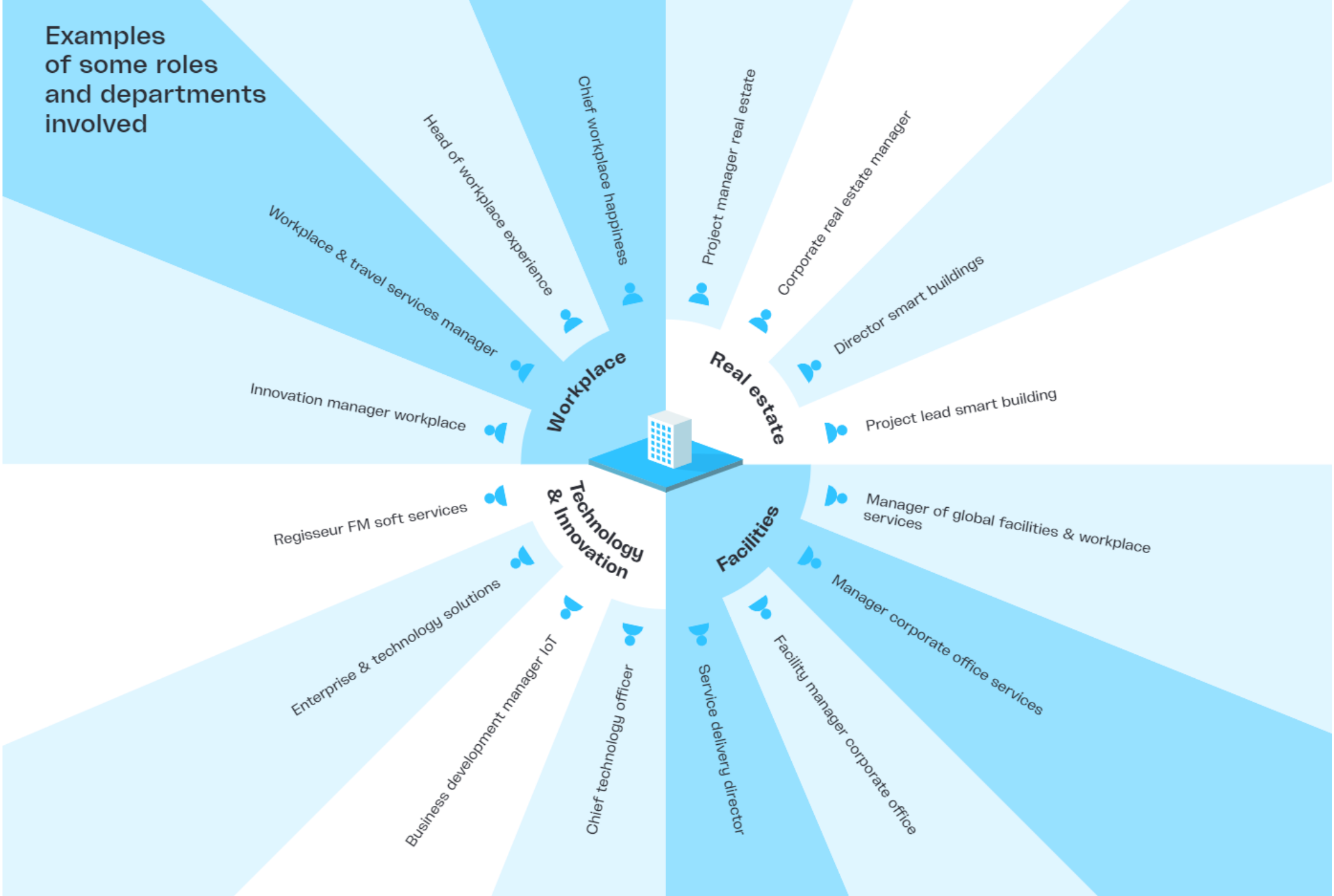
From smart to
responsive.

The background is a deep, dark blue space filled with numerous small, bright white and light blue stars. A thin, white diagonal line is visible in the upper left quadrant. The overall texture is grainy and ethereal, suggesting a night sky or a distant galaxy.

Imagine

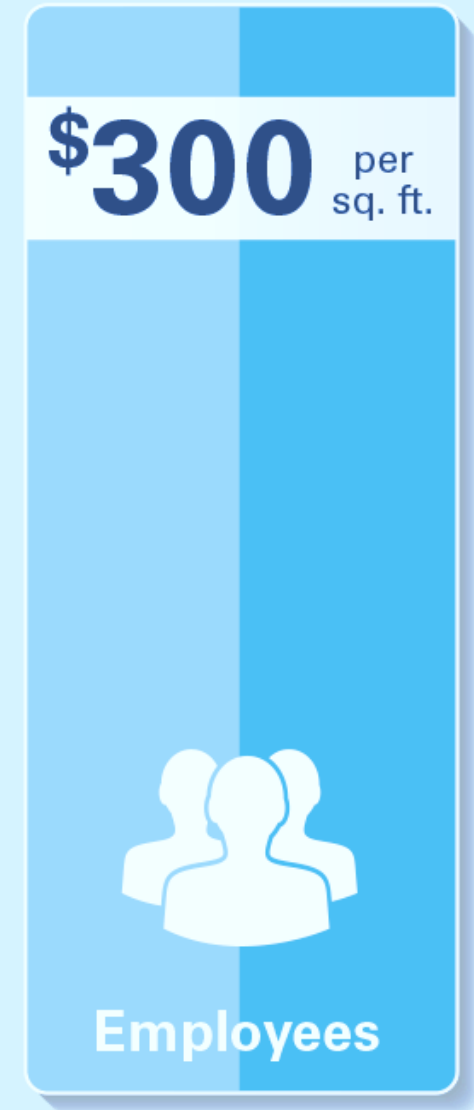
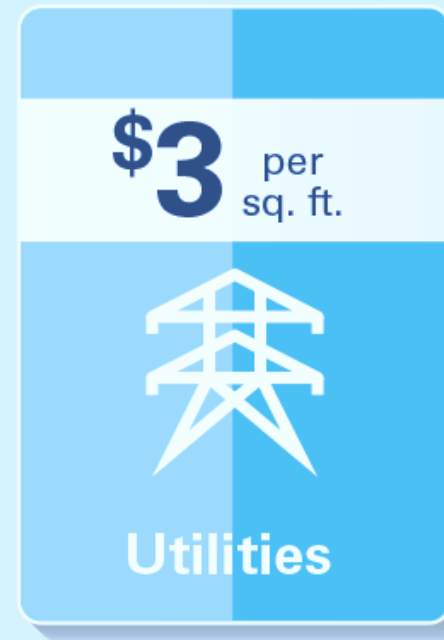
De uitdaging van samen innoveren

Examples of some roles and departments involved



3/30/300 rule

Typical spend for an organization





De valkuilen

- Gefragmenteerde IoT-markt
- De implementatie
- Losse IT aankopen
- Losse data
- Bestaand gebouw beheer system
- Het beheer
- Niet investeren in een goede infrastructuur
- Betonnen wanden, metalen branddeuren



**Het creëren van een smart
building is een hele uitdaging!**

Are we adapting quickly
enough to the rapidly
changing world around us?

 **BlackBerry**[™]

YAHOO!

NOKIA

 **myspace**

ToysRUs[®]

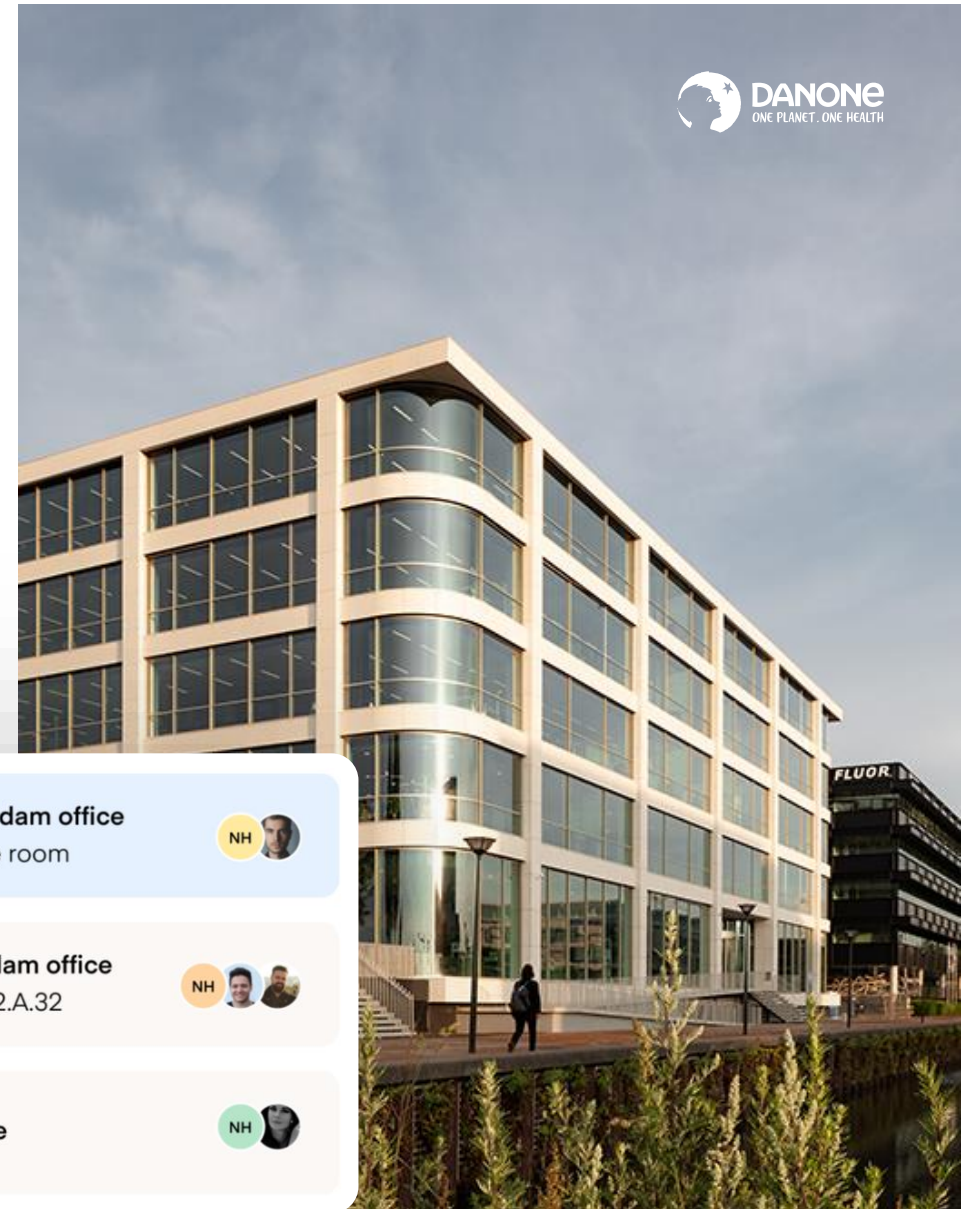


MOTOROLA

Waar begin je?

Start vandaag:

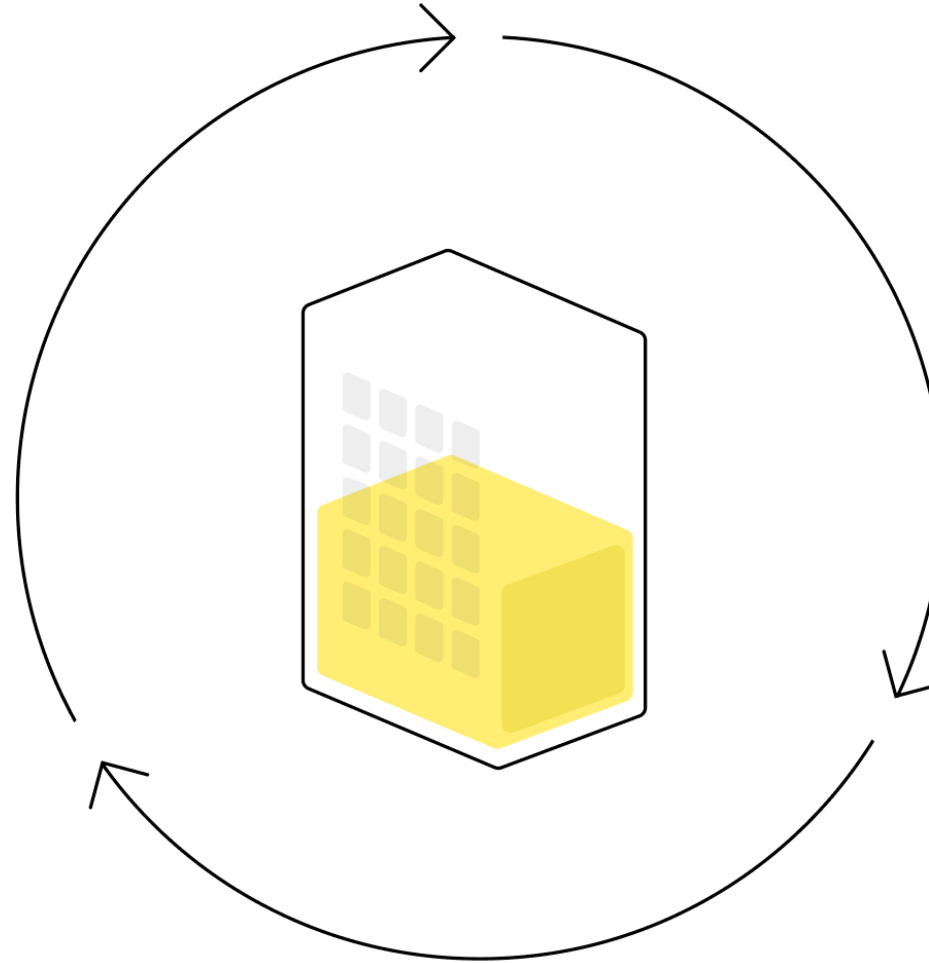
- Creëer een duidelijke visie voor de toekomst van het kantoor
- Leg de verantwoordelijkheid bij 1 workplace team bestaande uit: HR, IT, Data, Facilities, RE
- Ondersteun door keuzes te vereenvoudigen. Al en machine learning
- Plug and play SaaS producten.



- Duidelijke visie
- Continue process
- Interne middelen
- Open IT design
- Data delen
- Schakel experts in
- Duidelijke verantwoordelijkheden



**(Re)Design your
workplace**



**Employee
Experience**

**Measure &
Learn**

Are you ready for the next chapter of work?



Rowan de Bruin
Smart Office Advisor &
Workplace Enthusiast
at Mapiq

r.debruin@mapiq.com



