

FIDS

T-Systems Airport User Days & Conference
September, 7-8 2023

T Systems

Let's power
higher performance



*This presentation contains confidential information and is distributed on the understanding that it will not be used, in whole or in part, in any form or made available to any third party, except for participants of the User Conference and employees of the respective airport companies.

Agenda

01 Customer Overview

◆ **02** FIDS Product Vision and Transition Strategy

◆ **03** New FIDS Features

◆ **04** UI Demo / Q&A



01

Customer Overview

T Systems

Let's power
higher performance



FIDS Customers around the Globe



02

FIDS Vision and Development Strategy

T Systems

Let's power
higher performance

FIDS Product Vision

What is important for any Airport using Passenger Information Systems?

System Availability
Flexibility
Costs
Business Requirements
Support Quality
Offline Operation
Customer – Manufacturer Relationship
Man Power / Effort
Future Proof Setup
Reliability

ACRO – Our NextGen Airport Management Platform

Modern Architecture/ Open platform

- Modern micro-frontend architecture
- Event-based integration
- Open & accessible platform
- Fully scalable for best performance during read & write.
- Customer specific/task-based frontends

Operational Efficiency

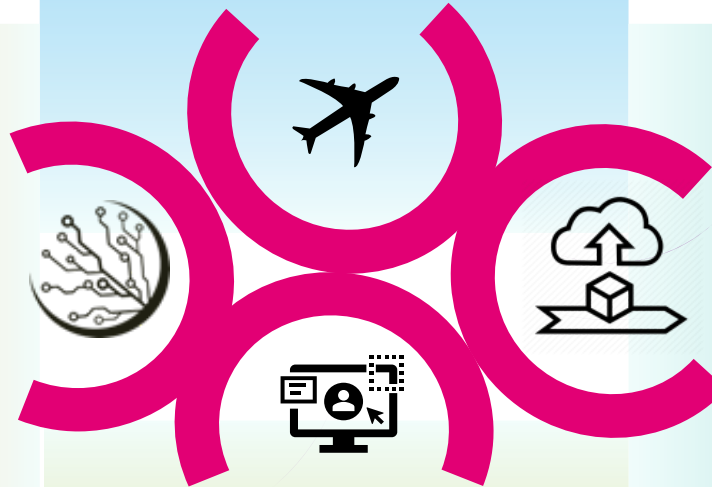
- Configure application to fit specific workflow
- Configure processes
- Pro-active collaboration

Efficient Deployment Options

- Service based , deploy services what customer wants
- Various deployment models(on-Premise, Cloud, Hybrid)

Enhanced User Experience

- Personalized & intuitive
- Modern well-crafted Dashboard
- Context-based widget communication



FIDS Product Vision

T-Systems FIDS goes Acro Product Vision

Acro Platform

- Envisaged Framework for T-Systems Airport Management Suite
- unify all Major T-Systems Portfolio Elements into one Portal/Framework
 - AODB
 - RMS
 - FIDS, etc.

Unified Technology Approach

- Flexible On-Premise Platform (Kubernetes/ Docker/ OpenShift)
- External Cloud

Deployment

- Future Proof - Big Developer Team Working on same Tech Stacks
- Patch, Update, Security Services out of one Source
- User Experience through one Look and Feel approach with individual Dashes
- CI/CD concepts
- Ongoing Development from Base to Top

FIDS Product Vision

T-Systems Product Vision

Smooth Transition,
Moving encapsulated Components towards new technology



- Minimize operational Risks and Effort
- Transition through Evolution
- Optimize Time to Market

Not forcing customers to „Big Bang“ cutover

- Reduce Invest
- Downwards compatible
- Implement&Influence System enhancements & Deployment on the move

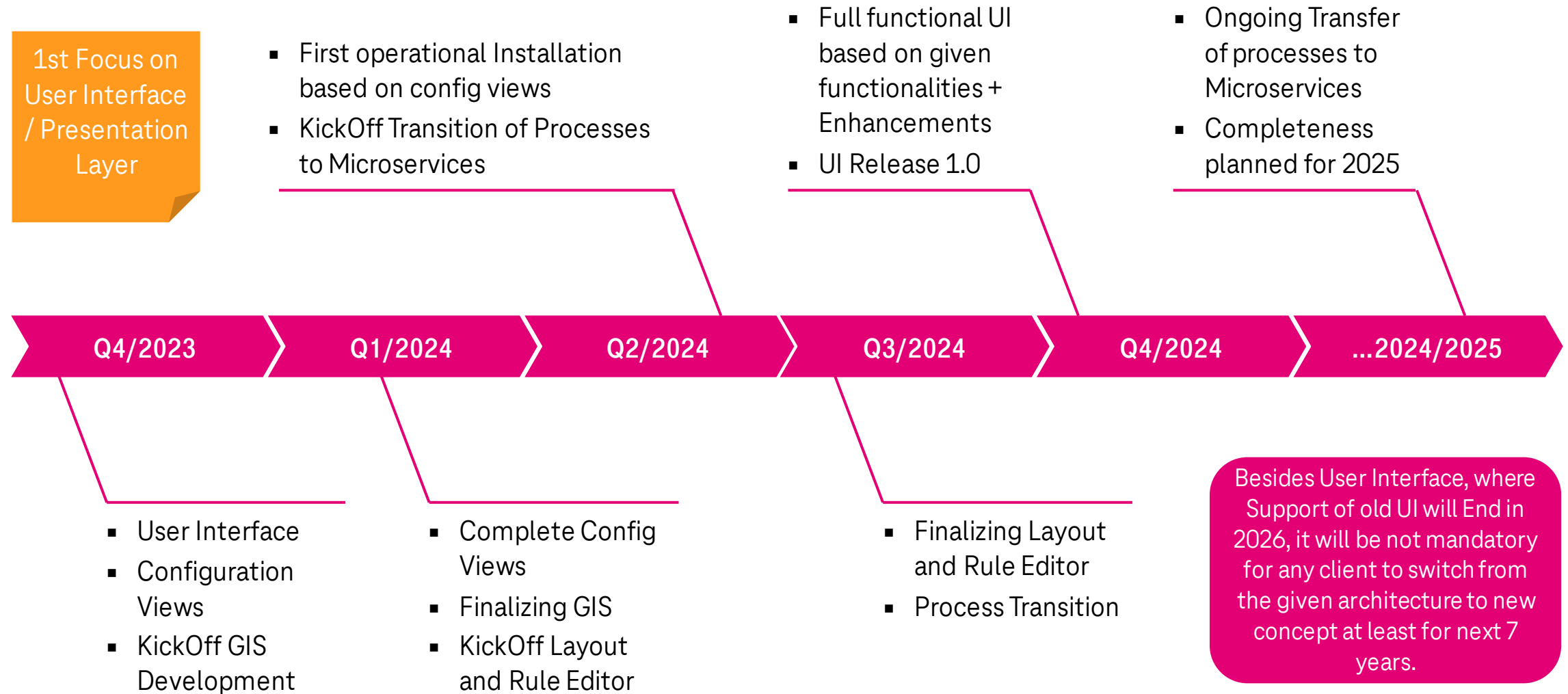


BIG Bang – Major Software Renewal / all components



FIDS Product Vision

T-Systems Product Development Timeline



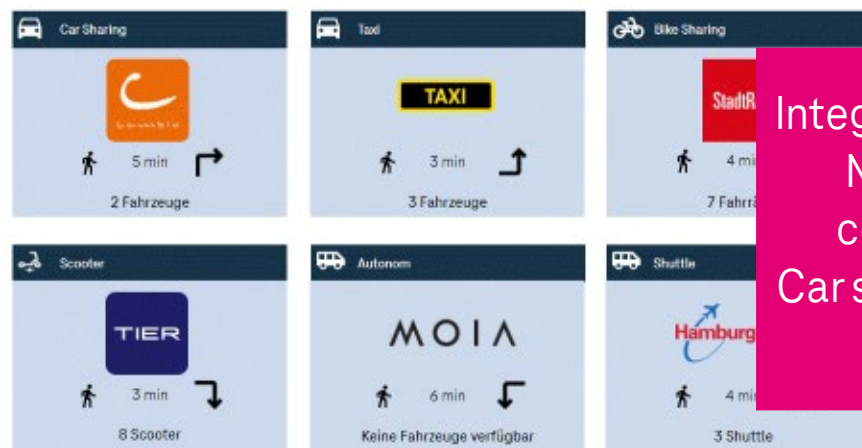
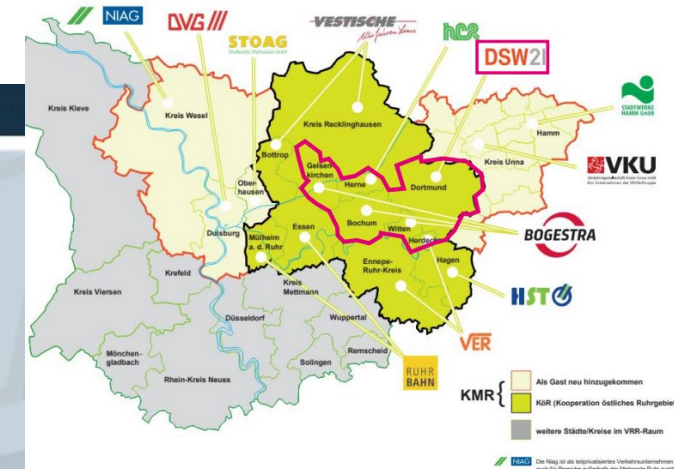
03

New & planned FIDS Features and Demo

FIDS – goes Rail and Street

FIDS contracted to serve Public Transport in Germany largest Metropol Area

System	Abfahrtsort	Zug	Abfahrt	Gleis
	Alteslohe	RB 81	5 min 10:43	6D-E
	Alte Hbf	ICE 1579	4 min 10:46	12
	Alte Hbf	RE 80	5 min 10:47	6A-C
	Alte Hbf	ME RB41	4 min 10:52	14
	Alte Hbf	RE 7	5 min 10:53 +8	13D-F
System	Abfahrtsort	Linie	Abfahrt	Gleis
	Alte Hbf Tiefstack	3	5 min sofort	
	Alte Hbf	U4	5 min in 5 min	
S	Hamburg-Harburg Rathaus	S31	1 min in 6 min	3
S	Hamburg-Neugraben	S3	1 min in 6 min	4
S	Hamburg-Blankenese	S1	1 min in 6 min	1
BUS	Auf dem Sande (Speicherstadt)	6	5 min in 6 min	
BUS	Stadionstraße	3	5 min in 7 min	
U	Berliner Tor	U4	5 min in 7 min	
BUS	Schenefelder Platz, Schenefeld (Bz Hamburg)	37	5 min in 7 min	
BUS	Burgwedel (Bus)	5	5 min in 8 min	
BUS	Feldstraße (U)	17	5 min in 9 min	
BUS	Rödingsmarkt (Großer Burstah) (U)	31	5 min in 9 min	
S	Aumühle	S21	1 min in 9 min	4
BUS	Berliner Tor (Beim Strohhaus) (S+U)	2	5 min in 9 min	
BUS	Achterndiek, Schenefeld (Bz Hamburg)	2	5 min in 9 min	
U	Barmbek	U3	5 min in 10 min	



Integration with Mobility concepts Car sharing etc.

FIDS new Features

Native Samsung Tizen Application



Support for Samsung SoC
using Samsung Tizen WebApp
For usage of Webis Client in
Terminal operation

Linux based DDS



Linux Driven DDS available
Decrease of Services possible
Reduce Server infrastructure
significantly.

Automated Power Switch usage



Integration of Server and
Business Logic control of
Display Power Connectors
Save energy and automatically
switch Devices down to 0
Watts if not in use

FIDS Screen synchronization



DJACO enhanced Sync
functionality.
Balances heterogen Hardware
Load by using a Master DJACO
trigger Signal.

FIDS new Features

IoT Sensors at DJACO Controller



Integration/Usage of any IoT Sensors on DJACO Controllers
Data Transfer through FIDS IoT Databroker
No additional Infrastructure required

Direct Public Transport Interfaces



Complete Integration of Public Transport Datasources in Germany (VDV)
FIDS in use at Public Transport Companies in Germany

FIDS for in BUS Signage



Use your FIDS System to inform Passengers in Transfer Buses
No separate System required
In Bus Hardware needs to be compatible to run the Client also in offline mode

Integrated Grafana based Monitoring



Monitor System overall health status in Configurable Grafana Dashboards and configure your own Alarms and Thresholds.



FIDS – BuildIn Advertising Module and CMS

Detail View

File ID: American airlines

File type: image

File name: American-Airlines.jpg

PCX logo file: 69

Logo number: 69

Media width: 940

Media height: 470

Comment: American airlines image for testing

Advertisement: ☐

Preview:

OK Zurücksetzen Abbruch

1st Manage Content and mark as “Commercial”

Playlists

Name: newTest

Description: testing purpose only

Valid From: 05/01/2023 12:16:58

Valid To: 06/06/2023 12:16:58

Media:

Search By Name 33 Media Count

aa.jpg tmaxing.jpg 003_d5s.mp4 b18.png 40.png png21.png sssqwer.png aal.jpg border_dark_grey... border_light.png border_dark_grey... border_light2.png

2nd Create Playlists by Drag’n’Drop

Channel View

Search by playlist name

Channels: Channel terminal 2, Channel area B, Channel Desks, Channel baggage belts monitor, Channel Gates, Channel for Airline LH

channel channel: Channel terminal 2

Description: Product-ID related advertisements are published in this channel. Channels main focus will be Product-ID.

Default Playlist:

Calendar: June 2023, July 2023, August 2023

Timeline: 00:00, 00:05, 00:10, 00:15, 00:20, 00:25, 00:30, 00:35, 00:40, 00:45, 00:50, 00:55, 01:00, 01:05, 01:10, 01:15

23-Jun-2023:

24-Jun-2023:

25-Jun-2023:

26-Jun-2023:

27-Jun-2023:

28-Jun-2023:

3rd Define where and when to call a specific campaign

Advertisement Report

Filter: Event Time From: 06/01/2023 07:29:09, Event Time To: 06/23/2023 07:29:09, Channel: Select a Channel, Playlist: Airlines, Device: Select a Device, Page: Select a Page

Load Data

Search

Playlist Tl	Channel Tl	Device Tl	Event Time	Page Name Tl	Layout Tl	Frame Tl	Frame Row Tl	Column Tl	Sheet Tl	Content Tl	Previous Content Tl
Airlines	Channel for Airline LH	FB-FID-MON-49	6/1/2023, 11:13:45	9903	KUT_PUB_ARR_DEP_LIST	BOY_BASE_SHUTTER_4X50	1	WERBUNG1	HH_SHEET1	ARR_PA_BIBT	ARR_PA_FLIGHTNUMBER

4th Get a report what has been shown where and when

FIDS Acro Integration Concepts & Demo

T Systems 12 Nov 2022 16:22 (Local) Vaisakh Sreenivas Administrator

Dashboard

DDS Overview

6 DDS Configured

Active - 4 Inactive - 2

2 OK 1 KO 1 ERROR

Display Devices (DJACO) - Overview

60 Display Monitors Configured

Active - 40 Inactive - 20

30 OK 1 KO 9 ERROR

Display Devices (WEBIS) - Overview

20 WEB Monitors Configured

Active - 20 Inactive - 0

18 OK 1 KO 1 ERROR

Device Status - Map View

Network Configuration

Central Server **Distribution Servers** Device Types Display Devices (DJACO) Display Devices (WEBIS)

Add Delete Duplicate

Active	DDS No	Description	Comment	Standby DDS	IP Address	Inventory No	Location	Control Port	Data Port	Type	Release
✓	DDS-1	Distribution Server 1	test	DDS-2	10.10.232.11	IV01AB231	DC-Rack 1	25017	25019	Windows	V22.2207
✓	DDS-2	Distribution Server 2	test	DDS-1	10.10.232.12	IV01AB232	DC-Rack 1	25017	25019	Windows	V22.2207
✗	DDS-3	Distribution Server 3	test	DDS-4	10.10.232.13	IV01AB234	DC-Rack 2	25017	25019	Windows	V22.2207
✓	DDS-4	Distribution Server 4	test	DDS-3	10.10.232.14	IV01AB237	DC-Rack 2	25017	25019	Windows	V22.2207

Details Additional Attributes History

Active ☒

DDS No: DDS-2

Description: Distribution Server 1

Standby DDS: DDS-1

Comment: This is a test comment

IP Address: 10.10.232.12

Control Port: 25017

Data Port: 25019

Release: V22.2207

Location: DC-Rack-1

Inventory No: IV01AB232

Cancel Save

Network Configuration

Central Server **Distribution Servers** Device Types Display Devices (DJACO) Display Devices (WEBIS)

Add Delete Duplicate

Active	DDS No	Description	Comment	Standby DDS	IP Address	Inventory No	Location	Control Port	Data Port	Type	Release
✓	DDS-1	Distribution Server 1	test	DDS-2	10.10.232.11	IV01AB231	DC-Rack 1	25017	25019	Windows	V22.2207
✓	DDS-2	Distribution Server 2	test	DDS-1	10.10.232.12	IV01AB232	DC-Rack 1	25017	25019	Windows	V22.2207
✗	DDS-3	Distribution Server 3	test	DDS-4	10.10.232.13	IV01AB234	DC-Rack 2	25017	25019	Windows	V22.2207
✓	DDS-4	Distribution Server 4	test	DDS-3	10.10.232.14	IV01AB237	DC-Rack 2	25017	25019	Windows	V22.2207

Details Additional Attributes History

Property	Comment	Default	Value
BRDeviceDDS	alternative ip address for clients to connect to		
BRReboot	Autoreboot	Yes	No
BRDownloadCommon	Download resource files	No	
BRDownload	Download Yes/No	No	No
BRTimeBroadcast	Enable time telegram f. dZine,Jaco	Yes	
HTTP_PORT_DL	http server download port	20080	80
BRPorts	Number of DDS ports	16	
FS_PASSWORD	Remote access: password		

FIDS Acro Integration Concepts & Demo

Demonstration of FIDS @ ACRO

Thank you!

Stefan Szymanski
Product Owner FIDS
Airport Management

stefan.szymanski@t-systems.com

+49 241 9197349

Lukas Wilke
IT-Consultant
Airport Management

lukas.wilke@t-systems.com

+49 171 8470302

T Systems

Let's power
higher performance